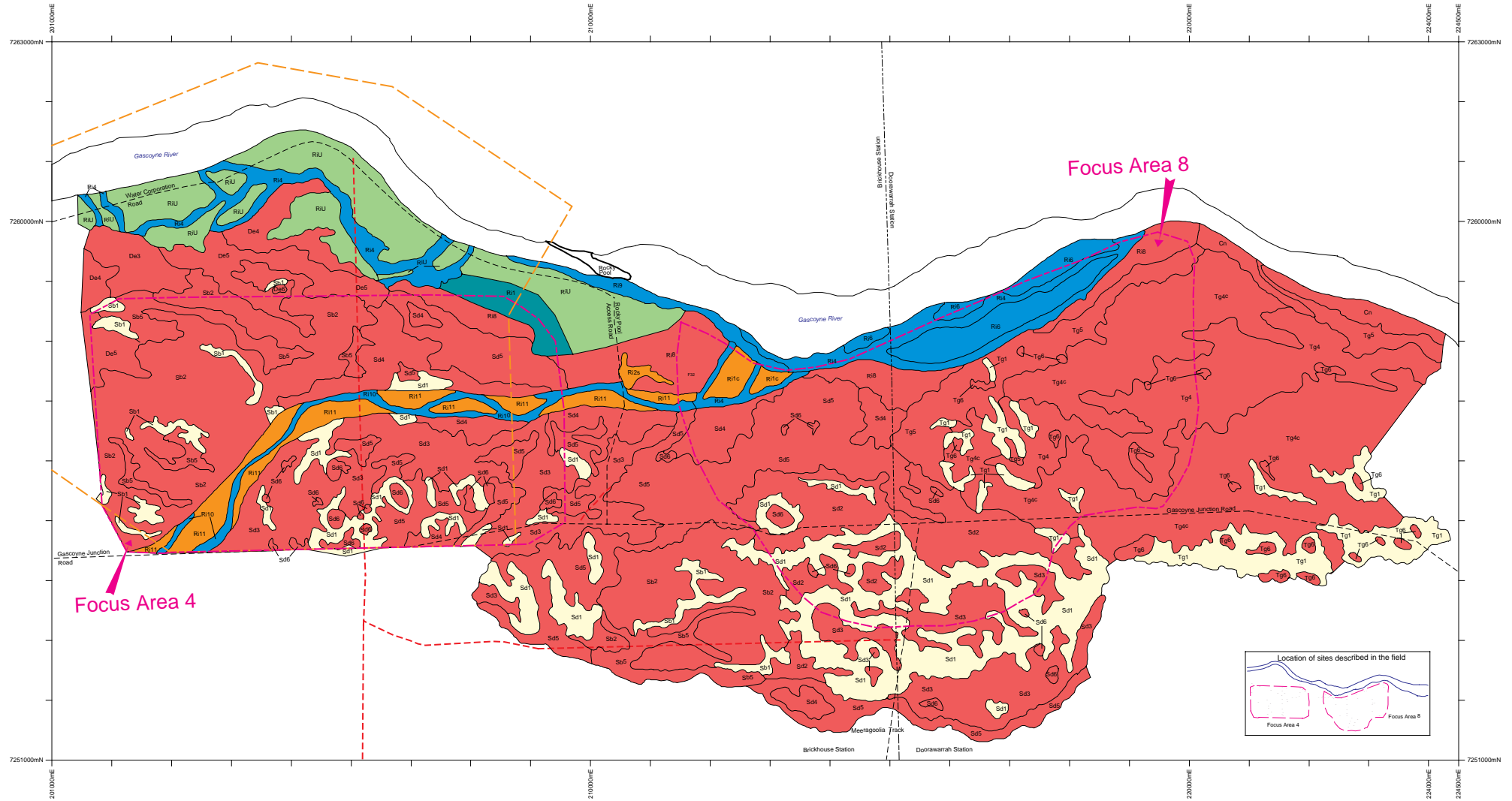


# LOWER GASCOYNE SOIL SURVEY

Sheet 2 of 2



LEGEND	
<span style="background-color: #f08080; border: 1px solid black; display: inline-block; width: 15px; height: 10px;"></span> Channel System	<span style="background-color: #008080; border: 1px solid black; display: inline-block; width: 15px; height: 10px;"></span> River Lower Terrace Subsystem (R16)
<b>Delta System</b>	<span style="background-color: #008080; border: 1px solid black; display: inline-block; width: 15px; height: 10px;"></span> River Low Lying Sandy Terrace Subsystem (R17)
<span style="background-color: #fff9c4; border: 1px solid black; display: inline-block; width: 15px; height: 10px;"></span> Delta Sand Dune Subsystem (De1)	<span style="background-color: #f08080; border: 1px solid black; display: inline-block; width: 15px; height: 10px;"></span> River Saline Duplex Terrace Subsystem (R18)
<span style="background-color: #f08080; border: 1px solid black; display: inline-block; width: 15px; height: 10px;"></span> Delta Bluebush Flat Subsystem (De2)	<span style="background-color: #008080; border: 1px solid black; display: inline-block; width: 15px; height: 10px;"></span> River Rocky Margin Subsystem (R19)
<span style="background-color: #f08080; border: 1px solid black; display: inline-block; width: 15px; height: 10px;"></span> Delta Bluebush-Acacia Scrub Subsystem (De3)	<span style="background-color: #008080; border: 1px solid black; display: inline-block; width: 15px; height: 10px;"></span> River Relict Channel Subsystem (R110)
<span style="background-color: #f08080; border: 1px solid black; display: inline-block; width: 15px; height: 10px;"></span> Delta Acacia Scrub Subsystem (De4)	<span style="background-color: #f08080; border: 1px solid black; display: inline-block; width: 15px; height: 10px;"></span> River Relict Terrace Subsystem (R111)
<span style="background-color: #f08080; border: 1px solid black; display: inline-block; width: 15px; height: 10px;"></span> Delta Scald Subsystem (De5)	<span style="background-color: #90ee90; border: 1px solid black; display: inline-block; width: 15px; height: 10px;"></span> River Undifferentiated Terraces Subsystem (R1U)
<span style="background-color: #f08080; border: 1px solid black; display: inline-block; width: 15px; height: 10px;"></span> Delta Claypan Subsystem (De6)	<b>River System</b>
<span style="background-color: #f08080; border: 1px solid black; display: inline-block; width: 15px; height: 10px;"></span> Delta Drainage Depression Subsystem (De7)	<span style="background-color: #008080; border: 1px solid black; display: inline-block; width: 15px; height: 10px;"></span> River Sandy Terrace Subsystem (R11)
<span style="background-color: #f08080; border: 1px solid black; display: inline-block; width: 15px; height: 10px;"></span> Delta Swamp Subsystem (De10)	<span style="background-color: #f4a460; border: 1px solid black; display: inline-block; width: 15px; height: 10px;"></span> River Sandy Terrace Subsystem (coarse sand phase) (R11c)
	<span style="background-color: #f4a460; border: 1px solid black; display: inline-block; width: 15px; height: 10px;"></span> River Sandy Terrace Subsystem (saline phase) (R11s)
	<span style="background-color: #008080; border: 1px solid black; display: inline-block; width: 15px; height: 10px;"></span> River Loamy Terrace Subsystem (R12)
	<span style="background-color: #f4a460; border: 1px solid black; display: inline-block; width: 15px; height: 10px;"></span> River Loamy Terrace Subsystem (saline phase) (R12s)
	<span style="background-color: #f4a460; border: 1px solid black; display: inline-block; width: 15px; height: 10px;"></span> River Clayey Terrace Subsystem (R13)
	<span style="background-color: #f08080; border: 1px solid black; display: inline-block; width: 15px; height: 10px;"></span> River Clayey Terrace Subsystem (saline phase) (R13s)
	<span style="background-color: #008080; border: 1px solid black; display: inline-block; width: 15px; height: 10px;"></span> River Drainage Depression Subsystem (R14)
	<span style="background-color: #008080; border: 1px solid black; display: inline-block; width: 15px; height: 10px;"></span> River Drainage Depression Subsystem (flow zone phase) (R14tz)
	<span style="background-color: #f4a460; border: 1px solid black; display: inline-block; width: 15px; height: 10px;"></span> River Sand Ridge Levee Subsystem (R15)
	<b>Sable System</b>
	<span style="background-color: #fff9c4; border: 1px solid black; display: inline-block; width: 15px; height: 10px;"></span> Sable Sand Dune Subsystem (Sb1)
	<span style="background-color: #f08080; border: 1px solid black; display: inline-block; width: 15px; height: 10px;"></span> Sable Bluebush Flat Subsystem (Sb2)
	<span style="background-color: #f08080; border: 1px solid black; display: inline-block; width: 15px; height: 10px;"></span> Sable Scald Subsystem (Sb5)

<span style="background-color: #fff9c4; border: 1px solid black; display: inline-block; width: 15px; height: 10px;"></span> Sandal Sand Dune Subsystem (Sd1)	<b>Target System</b>
<span style="background-color: #f08080; border: 1px solid black; display: inline-block; width: 15px; height: 10px;"></span> Sandal Bluebush Flat Subsystem (Sd2)	<span style="background-color: #fff9c4; border: 1px solid black; display: inline-block; width: 15px; height: 10px;"></span> Target Sand Dune Subsystem (Tg1)
<span style="background-color: #f08080; border: 1px solid black; display: inline-block; width: 15px; height: 10px;"></span> Sandal Bluebush-Acacia Scrub Subsystem (Sd3)	<span style="background-color: #f08080; border: 1px solid black; display: inline-block; width: 15px; height: 10px;"></span> Target Acacia Scrub Subsystem (Tg4)
<span style="background-color: #f08080; border: 1px solid black; display: inline-block; width: 15px; height: 10px;"></span> Sandal Scald Subsystem (Sd5)	<span style="background-color: #f08080; border: 1px solid black; display: inline-block; width: 15px; height: 10px;"></span> Target Acacia Scrub Subsystem (claypan phase) (Tg4c)
<span style="background-color: #f08080; border: 1px solid black; display: inline-block; width: 15px; height: 10px;"></span> Sandal Claypan Subsystem (Sd6)	<span style="background-color: #f08080; border: 1px solid black; display: inline-block; width: 15px; height: 10px;"></span> Target Scald Subsystem (Tg5)
<span style="background-color: #f08080; border: 1px solid black; display: inline-block; width: 15px; height: 10px;"></span> Sandal Swamp Subsystem (Sd10)	<span style="background-color: #f08080; border: 1px solid black; display: inline-block; width: 15px; height: 10px;"></span> Target Claypan Subsystem (Tg6)

<span style="background-color: #008080; border: 1px solid black; display: inline-block; width: 15px; height: 10px;"></span> Good Gascoyne soils	<span style="border-bottom: 1px solid black; width: 15px; display: inline-block;"></span> Map unit boundary
<span style="background-color: #90ee90; border: 1px solid black; display: inline-block; width: 15px; height: 10px;"></span> Undifferentiated Gascoyne soils	<span style="border-bottom: 1px dashed black; width: 15px; display: inline-block;"></span> Unsealed road
<span style="background-color: #f4a460; border: 1px solid black; display: inline-block; width: 15px; height: 10px;"></span> Marginal Gascoyne soils	<span style="border-bottom: 1px dashed black; width: 15px; display: inline-block;"></span> Station boundary
<span style="background-color: #fff9c4; border: 1px solid black; display: inline-block; width: 15px; height: 10px;"></span> Sand dunes	<span style="border-bottom: 1px dashed black; width: 15px; display: inline-block;"></span> Water Reserve boundary
<span style="background-color: #008080; border: 1px solid black; display: inline-block; width: 15px; height: 10px;"></span> Erosion prone Gascoyne soils	
<span style="background-color: #f08080; border: 1px solid black; display: inline-block; width: 15px; height: 10px;"></span> Unsuitable soils	

**Bibliographic reference**  
 Title, P.J. and Smolinski, H.J., 2002. "Lower Gascoyne Soil Survey". (Scale 1:50,000 2 map sheets).

**Acknowledgements**  
 Soil survey by P.J. Title and H.J. Smolinski, Department of Agriculture Western Australia. Digital cadastre base supplied by the Department of Land Administration. Map prepared by K. Kuswardiyanto, Department of Agriculture Western Australia.

**Reference**  
 Projection: Universal Transverse Mercator  
 Datum: Geocentric Datum of Australia 1994  
 Grid: Map Grid of Australia 1994 zone 50  
 Source data: Field survey and interpretation of aerial photography  
 Aerial photography: WA3131, 1:40,000, October 1992

**Use of map**  
 This map is designed for use at the published scale. Technical queries should be directed to Natural Resource Management Services, Department of Agriculture Western Australia.

