



Department of
Primary Industries and
Regional Development

Journal of the Department of Agriculture, Western Australia, Series 3

Volume 8
Number 5 *September-October, 1959*

Article 16

10-1959

Mr. H. M. Lister retires

Follow this and additional works at: https://library.dpird.wa.gov.au/journal_agriculture3

Recommended Citation

(1959) "Mr. H. M. Lister retires," *Journal of the Department of Agriculture, Western Australia, Series 3*: Vol. 8: No. 5, Article 16.

Available at: https://library.dpird.wa.gov.au/journal_agriculture3/vol8/iss5/16

This article is brought to you for free and open access by the Agriculture at Digital Library. It has been accepted for inclusion in *Journal of the Department of Agriculture, Western Australia, Series 3* by an authorized administrator of Digital Library. For more information, please contact library@dpird.wa.gov.au.

MR. H. M. LISTER

Mr. H. M. Lister Retires



Mr. Harold Montgomery Lister who retired from the Dairy Division of the Department of Agriculture in July of this year, was born in the city of Leeds in 1895 and received his primary and secondary education at the Leeds Modern School. He attended the Leeds University before coming to Australia, where he gained considerable experience in various dairy produce factories in Victoria, ultimately becoming foreman and assistant manager of a large dairy company at Foster, and manager of the Bradford Dairy Company.

In 1929 he came to Western Australia as manager of the Bunbury factory of the South-West Co-operative Dairy Farmers' Ltd. On the erection of the small dairy produce factory at Muresk Agricultural College and the inauguration of the course for the Diploma in Dairying, Mr. Lister was selected to occupy the post of superintendent. In this position he was responsible for the training of a number of young men who are now making their contri-

butions to the dairy industry in dairy produce factories and in various administrative posts.

Owing to the exigencies of wartime no students were available for the dairy course in 1942 and when a crisis arose regarding the export of surplus eggs, the Commonwealth Government decided to erect an egg-drying plant in West Perth.

Mr. Lister was transferred to undertake the organisation of the installation of equipment and the operation of the plant and continued in this position until 1946 when he returned to the Muresk College to recommence the Dairy Course.

In 1954 he was transferred to the headquarters of the Department of Agriculture in Perth as the Officer-in-Charge of Dairy Factory and Produce Supervision. His duties included the administration of the Dairy Industry and Margarine Acts, the direction of the operations of the Dairy Laboratory, and the activities of Dairy Instructors, responsible for farm dairy inspection.

You work it out! the extra you pay for poor season hay could BUY your **Cyclone** hay shed!



PRICED FROM

£295

for a 20' x 36' x 14' shed
complete and erected
on your property.

You know what your
baled hay costs to pro-
duce—you know what
hay costs to buy in a
poor season.

"CYCLONE"
PROTECTION
COSTS YOU
JUST
2/3
PER BALE

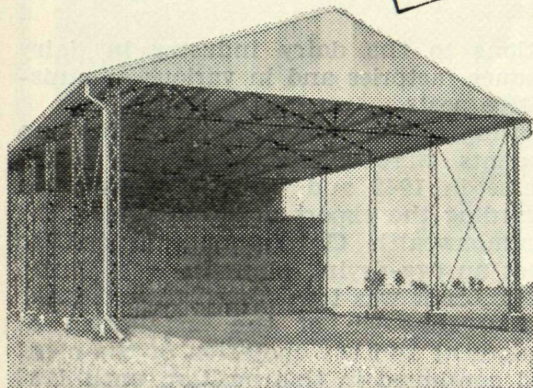
Take what you pay for poor season feed stock. Usually at least 25% over what it costs you to produce and bale. That 25% could more than cover, in the first season, the initial cost of your "Cyclone" shed, which works out at 2/6 per bale on a 30 ft. x 60 ft. shed and 3/- per bale on a 20 ft. x 40 ft. shed. Then you end up with a life-long asset, plus reliable, maintenance-free protection for your future fodder — or for valuable equipment, as you wish.

More Speed: "Cyclone" Sheds go up in days, and come complete with gable ends, guttering and downpipe — no "extras" to buy, no complications.

More Strength: Only "Cyclone" tubular steel construction gives greater strength, weight-for-weight, than any other metal section.

More Economy: "Cyclone" sheds are white ant, rot and weather resistant for longer life. And when "Cyclone" sell you a shed, it doesn't end there. You get on the spot advice from the day you order. You'll wonder why you waited so long when you start to use farmer-designed "Cyclone" sheds.

See your local "Cyclone" reseller today or
post this coupon.



YOU'VE A LIFETIME ASSET AND COMPLETE VERSATILITY

Not only the building you need now, but every other type is available. Shearing and implement sheds, feed and hay stores. All in a variety of shapes and sizes, all quick, easy to erect and superbly strong. Doors, windows, roof lights, extensions, too, are readily available to fit your particular requirements. All with the guaranteed standard you expect from "Cyclone."

Cyclone COMPANY OF
AUSTRALIA LIMITED

Cnr. Brown and Lime Streets, East Perth. 23 3171

Cyclone Co. of Aust. Ltd. (Your State)

Please send me post free illustrated literature on the following (please tick):

- ☐ Hay Sheds ☐ Implement Sheds
☐ Shearing Sheds ☐ Vermin-proof Barns

NAME.....

ADDRESS.....

C5931/FP