



Department of  
Primary Industries and  
Regional Development

## Journal of the Department of Agriculture, Western Australia, Series 3

---

Volume 6  
Number 1 *January-February, 1957*

Article 15

---

1-1957

### List of registered stock foods

Follow this and additional works at: [https://library.dpird.wa.gov.au/journal\\_agriculture3](https://library.dpird.wa.gov.au/journal_agriculture3)

---

#### Recommended Citation

(1957) "List of registered stock foods," *Journal of the Department of Agriculture, Western Australia, Series 3*: Vol. 6: No. 1, Article 15.  
Available at: [https://library.dpird.wa.gov.au/journal\\_agriculture3/vol6/iss1/15](https://library.dpird.wa.gov.au/journal_agriculture3/vol6/iss1/15)

This article is brought to you for free and open access by the Agriculture at Digital Library. It has been accepted for inclusion in Journal of the Department of Agriculture, Western Australia, Series 3 by an authorized administrator of Digital Library. For more information, please contact [library@dpird.wa.gov.au](mailto:library@dpird.wa.gov.au).

# STOCK FOODS

All foods for stock sold in Western Australia are required by the Feeding Stuffs Act, 1928-51, to be registered annually with the Department of Agriculture. For the purposes of the Act "Foods for Stock" includes stock licks, which in turn embrace all preparations claimed to supply or primarily intended to supply mineral matter to stock.

The registration year for stock foods commences on July 1 each year. When making application for registration manufacturers must submit a guaranteed analysis for each of their products, together with a list of ingredients used in each stock food. Regular inspection and sampling is carried out by officers of the Department to see that stock foods comply with the registered analysis.

Sellers of stock foods are required by the Feeding Stuffs Act to ensure that to each package is clearly and

conspicuously attached a label or brand showing the name and place of business of the manufacturer or importer, the registered brand and name of the food or lick and the registered analysis.

A list of stock foods and stock licks which have been registered for the current registration year appears hereunder together with a list of results of analysis of official samples taken by Departmental inspectors.

Before purchasing any food or lick buyers are advised to consult the list of registered stock foods and stock lists from which a comparison of foods or licks of similar types can be made and also to ensure that packages are correctly labelled. If any doubts arise inquiries should be made at the Department of Agriculture, where information on the provisions and requirements of the Feeding Stuffs Act and advice on other aspects of stock feeding can be obtained.

Stock Food.	Appl. No.	Brand.	By whom Registered.	Materials from which Made.	Registered Analysis.						
					Crude Protein.	Crude Fat.	Crude Fibre.	Sodium Chloride (NaCl).	Phosphoric Acid (P <sub>2</sub> O <sub>5</sub> ).	Calcium (Ca).	Other.
<b>A.—Simple Foods.</b>											
<b>1.—Meat Meals.</b>											
Whale Meal	8	"N.W.W."	Nor-West Whaling Co., Ltd.	Whale meat and Bones	60.0	{ 10.0 6.0*	1.0	{ 0.8 0.4*	10.8	9.5	
Meat Meal	19	"MASTER"	Burridge & Warren Pty., Ltd.	Waste meat	40.0	{ 13.0 5.0*	5.0	...	8.5*	7.5*	
Do.	36	"COOGEE"	Anchorage Butchers, Pty., Ltd.	Waste meat products	36.0	{ 18.0	2.0	{ 1.0 NH*	12.5	12.5	
Do.	110	"W.A.M.E."	The W.A. Meat Export Works	Meat, bone and blood	50.0	{ 13.0	2.0	{ 2.0 NH*	9.0*	8.0*	
Do.	161	"WATSONIA"	Watsons Foods Pty., Ltd.	Abattoir Offal	27.0	{ 19.7 17.7*	1.5	...	17.0*	6.0*	
Do.	166	"MIDLAND"	Midland Junction Abattoir Board	Animal offal residues	50.0	{ 18.0 15.0*	2.0	{ 1.5 NH*	13.3*	13.5*	
<b>2.—Meat and Bone Meals.</b>											
Meat and Bone Meal	13	"VITA-MEAL"	Wright's, Ltd.	Animal waste	42.0	{ 13.0 17.0*	2.0	{ 1.5 0.4*	13.0	15.0	
Do.	39	T.B. & S. in diamond, Albany	Thomas Borthwick & Sons (Aust.), Ltd.	Animal offals	45.0	{ 20.0	4.0	...	5.0*	9.0	
Protein Meal and Bone Meal	41	"CHAMPION"	Sims Cooper (Freezing Works) Pty., Ltd.	Meat Works offal	50.0	{ 18.0	5.0	{ 1.0 0.2*	10.5	8.0	
Do.	53	"IMPERIAL"	W. Angliss & Co. (Aust.), Pty., Ltd.	Animal meat, bones and livers	50.0	{ 16.0	2.0	...	8.5*	5.0*	
Bone and Meat Meal	54	"KITCHENS"	J. Kitchen & Sons Pty., Ltd.	Animal fat and bone	42.5	{ 8.0* 8.0*	2.5	{ 1.5 NH*	18.0	15.2	
Do.	118	"APEX"	E. J. Fry Pty., Ltd.	Meat, bone and blood	37.0	{ 7.0* 12.0	2.0	{ 1.0 1.0	13.0*	11.0*	
									15.0	15.0	
									5.0*	5.0*	



Feeding Meat and Bone Meal	"MERCURY"	H. C. Sleight, Ltd.	Animal Meat and bone	45-0	{ 14-0 } { 12-0 }	{ 1-5 }	{ 0-7 } { 0-6 }	20-0 17-1*	13-0 11-3*	...
3.—Liver Meals.	"IMPERIAL"	W. Angless & Co. (Aust.) Pty., Ltd.	Animal livers and lungs	65-0	{ 18-0 } { 10-0 }	{ 1-0 }	...	...	...	...
4.—Whale Solubles.	NOR-WEST WHALING CO., LTD.	Nor-West Whaling Co., Ltd.	Whale meat, bones, etc.	82-0	{ 0-4 } { 0-1 }	{ 0-1 }	{ 2-0 } { 1-4 }	1-4 1-1*	1-3 1-0*	...
5.—Fish Meals.	"ANCHO"	Anchorage Butchers Pty., Ltd.	Waste crayfish products	36-0	{ 12-0 } { 9-0 }	{ 10-0 }	{ 3-5 } { 2-5 }	7-0 4-0*	14-0 11-0*	...
6.—Milk Foods.	"SUNNY WEST"	Sunny West Co-op. Dairies, Ltd.	Buttermilk	29-0	{ 11-0 } { 2-0 }	{ 0-5 }	{ 3-0 } { 1-0 }	2-5 1-5*	1-5 0-5*	{ Moisture 9-7 Ash 8-6 Carbo. Hyd. 43-9 Lactose 68-0 Lactose 55-0 }
Krafco	"KRAFCO"	Kraft Foods, Ltd.	Dried whey	10-0	{ 1-0 } { 0-5 }	NZ	{ 4-2 } { 3-8 }	2-4 1-0*	1-5 0-7*	...
Skim Milk Powder	"PETERS"	Peters Creameries (W.A.) Pty., Ltd.	Skim milk	35-30	0-25*	1-0	1-78	2-41	1-29	...
7.—Wheat and Wheatens.	"MILLERS"	W. H. Milne & Co. (W.A.), Ltd.	Wheat	8-00	...	5-00	...	...	...	...
By-Products.	"C" MEAL	W. Thomas & Co. (W.A.), Ltd.	do.	8-0	...	10-0	...	...	...	...
8.—Oats and Oatens.	"WESTERN"	David Gray & Co., Ltd.	Malt grains, linseed meal, yeast, whole solubles, pollard, wheat cereals, cobalt, chloride, copper sulphate, manganese sulphate	20-0	5-0*	7-0	{ 1-5 } { 0-5 }	1-5 0-5*	1-0 0-15*	...
9.—Oil Seed Meals.	"ENERGY"	Harvey Produce Supply	Wheat, barley, oats, bran, pollard, linseed meal, bone flour, tech urea, meat meal, sodium sulphate	16-0	{ 2-0 } { 1-0 }	{ 8-0 }	{ 1-5 } { 1-0 }	1-0 0-5*	2-0 1-0*	...
10	do.	do.	Wheat, bran, pollard, barley, oats, bone flour, tech urea, sodium sulphate	11-0	{ 2-0 } { 1-0 }	{ 8-0 }	{ 1-5 } { 1-0 }	1-0 0-5*	2-0 1-0*	...
11	do.	do.	Wheat, barley, oats, bran, bone flour, tech urea	11-0	{ 2-0 } { 1-0 }	{ 10-0 }	{ 1-5 } { 1-0 }	1-0 0-5*	2-0 1-0*	...
47	"EVE-LYN"	Tropical Traders & Patersons, Ltd.	Gristed wheat, barley, rye, pollard, salt, limestone, chalk, herbs, animal charcoal, molasses, sulphur, sulphate iron, copper sulphate	5-0	{ 2-0 } { 1-0 }	5-5	{ 13-0 } { 12-0 }	4-25 3-25*	9-5 8-5*	{ Sulphur 3-6 }
101	"WBS-FARMERS"	Westralian Farmers, Co-op., Ltd.	Bran, pollard, wheat germ, coconut meal, peanut meal, brewers grain, rolled wheat, meat meal, bone meal, limestone, salt, blue stone	16-0	{ 5-0 } { 2-5 }	{ 10-0 }	{ 3-5 } { 2-0 }	3-5 2-3*	2-5 2-0*	...
102	do.	do.	Bran, pollard, oat meal, meat meal, bone meal, brewers grain, limestone, salt, molasses	11-0	{ 5-0 } { 2-0 }	{ 10-0 }	{ 2-0 } { 0-5 }	2-0 1-0*	2-5 2-0*	...
103	do.	do.	Bran, pollard, oat meal, molasses, bone meal, meat meal, urea, common salt	11-0	{ 8-0 } { 5-0 }	7-0	{ 3-0 } { 2-0 }	2-0 1-0*	2-0 1-0*	...

\* Minimum.



# STOCK FOODS—continued

Stock Food.	Applic. No.	Brand.	By whom Registered.	Materials from which Made.	Registered Analysis.							
					Crude Protein.	Crude Fat.	Crude Fibre.	Sodium Chloride (NaCl).	Phosphoric Acid (P <sub>2</sub> O <sub>5</sub> ).	Calcium (Ca).	Other.	
<b>Compound Foods—contd.</b> <i>Cattle Foods—contd.</i>												
11 per cent. Protein Sweet Dairy Food	139	" THOMAS "	W. Thomas & Co. (W.A.), Ltd.	Pollard, bran, gristed grain, malt comblings, rock phosphate, molasses, oyster flour, salt manganese sulphate, iodine, cobalt sulphate	% (Min.) 11.0	% (Max.) 1.5*	% (Max.) 10.0	% (Max.) { 2.0 1.0*	% (Max.) 2.5 1.0*	% (Max.) 4.0 1.0*	% { Manganese 600 p.p.m. Iodine 10.2 p.p.m. Cobalt 30.0 p.p.m.	
16 per cent. Protein Sweet Dairy Food	140	do.	do.	Pollard, bran, gristed grain, malt comblings, rock phosphate, molasses, oyster flour, salt manganese sulphate, tech urea do.	16.0	1.5*	10.0	{ 2.0 1.0*	2.5 1.0*	4.0 1.0*	do.	
16 per cent. Protein Sweet Dairy Food	141	do.	do.	do.	16.0	1.5*	8.0	{ 2.0 1.0*	2.5 0.2*	4.0 0.75*	do.	
32 per cent. Dairy Cake Concentrate	142	do.	do.	do.	32.0	1.5*	10.0	{ 5.0 2.0*	8.5 3.5*	9.0 4.0*	do.	
Sweet Dairy Food	156	" BROWNE'S "	Browne's Dairy, Ltd. ....	Linseed and peanut meal, coconut and whole meal, tech urea, pollard, bone flour, oyster flour, sodium chloride, manganese sulphate, iodine cobalt	16.0	{ 5.82 5.0*	{ 14.9	{ 2.0 1.0*	2.5 1.0*	4.0 1.0*	....	
<b>2.—Calf Foods.</b>												
Calf Food	15	WESTERN	David Gray & Co., Ltd.	Malt grains, milk powder, yeast, whole solubles, pollard, wheat cereals, and trace elements	16.0	6.0*	7.5	{ 1.5 0.5*	1.5 0.5*	1.00 0.15*	....	
Do.	34	HARPER'S "STAR"	Robert Harper & Co., Ltd.	Wheat, oats, rice, barley, linseed, mustard, branning, whiting, salt, peas, condiments	12.0	2.5 *	10.0	{ 2.0 1.0*	2.5 1.0*	1.0 0.25*	....	
Do.	45	EVE-LYN	Tropical Traders & Patersons, Ltd.	Gristed wheat, barley, rye, pollard, linseed, salt, sugar, calc, turmeric, sodium bicarbonate, cream tartar, foenugreek, coriander, copper	8.5	2.0*	3.86	{ 3.5 2.5*	1.25 0.25*	1.0 0.2*	Bicarbonate 66.45 Sulphur 1.75	
Do.	57	KAF-O-VITE	Goldsbrough Mort & Co., Ltd.	Wheat and rice pollard, barley, wheat, meat, coconut, peanut, safflower and lucerne meals, calcium bone charcoal and sugar	16.0	{ 7.0 6.0*	8.0	<i>nil</i>	2.5*	4.2*	....	
Calf Meal "A-B" (A and D <sub>2</sub> )	104	WESFARMERS	Westralian Farmers Co-op., Ltd.	Pollard, buttermilk, linseed meal, dried yeast, wheat meal, wheat germ, meat meal, limestone, bone meal, antibiotics and vitamins A and D <sub>2</sub>	20.0	{ 5.0 3.0*	3.0	{ 2.0 0.5*	2.5 1.5*	1.5 1.0*	{ 2000 10/per lb. Vita "A," Vita "D <sub>2</sub> ," 150 10/per lb.	
20% Protein Vitaminised Antibiotic Calf Food	138	THOMAS	W. Thomas & Co. (W.A.), Ltd.	Linseed and coconut meal, pollard, bone and oyster flour, salt, manganese sulphate, iodine, cobalt, stabilised vitamins A and D <sub>2</sub> , procaine penicillin	20.0	2.5*	8.0	{ 3.0 0.5*	2.5 0.2*	2.5 0.5*	{ Vita "A," 6,000,000 IU/ton Vita "D <sub>2</sub> ," 1,800,000 IU/ton Manganese 60 p.p.m. Cobalt 3 p.p.m. Iodine 1.2 p.p.m.	
<b>3.—Sheep Foods.</b>												
Sheep Nuts	1	WESTERN	Hemphill Gray Oil Mills Pty., Ltd.	Malt grains, yeast, linseed, meat meal, whole solubles, molasses, wheat, rye, barley	20.0	{ 4.0 3.0*	7.5	{ 1.5 0.5*	1.5 1.0*	2.5 1.0*	{ Cobalt, Copper, Trace Vitamin B.	



Sheep Food	...	...	48	EVE-LYN	...	Tropical Traders & Patersons, Ltd.	...	5.0	{ 2.0 1.0 }	{ 5.0 }	{ 13.5 12.5 }	4.0 3.5	9.6 8.6	Sulphur 2.75
Maintenance Cubes	...	...	105	WESFARMERS	...	Westralian Farmers Co-op., Ltd.	...	14.0	{ 6.0 4.5 }	{ 6.5 }	{ 3.5 2.0 }	3.5 2.3	2.5 2.0	...
Sheep Breeder Cubes	...	...	106	do.	...	do.	...	18.0	{ 8.5 7.5 }	{ 7.5 }	{ 3.5 2.0 }	4.5 3.5	2.5 2.0	...
11% Protein Vitamised Maintenance Sheep Nuts	...	...	149	THOMAS	...	W. Thomas & Co. (W.A.), Ltd.	...	11.0	{ 7.5 1.0 }	{ 15.0 }	{ 2.0 1.0 }	2.0 0.5	3.5 1.5	Manganese 60 p.p.m. Iodine 1.2 p.p.m. Cobalt 3 p.p.m. Vita "A" 6,000,000 Vita "D <sub>3</sub> " 1,800,000 do.
21% Protein Vitamised Ewe Lamb and Breeder Nuts	...	...	150	do.	...	do.	...	21.0	2.0	11.5	{ 4.0 2.0 }	3.0 1.0	4.0 2.0	do.
4.—Poultry Foods.														
Laying Mash No. 1	...	...	12	WRIGHTS	...	Wright, Ltd.	...	16.0	{ 6.0 3.0 }	{ 6.0 }	{ 1.5 0.75 }	3.0 1.0	3.5 1.0	...
Fattening Mash	...	...	24	MILLERS	...	W. H. Milne & Co.	...	13.0	{ 6.0 3.0 }	{ 6.0 }	{ 1.5 0.75 }	3.0 1.0	3.5 1.0	...
Laying Mash Vit. "A" and "D <sub>3</sub> " Fortified	...	...	27	do.	...	do.	...	16.0	{ 6.0 3.0 }	{ 6.0 }	{ 1.5 0.75 }	3.0 1.0	3.5 1.0	Vita "A" 6,000,000 1U/ton. Vita "D <sub>3</sub> " 600,000 1U/ton.
Laying Mash No. 1	...	...	29	do.	...	do.	...	16.0	{ 6.0 3.0 }	{ 6.0 }	{ 1.5 0.75 }	3.0 1.0	3.5 1.0	...
Laying Mash ("A" and "D <sub>3</sub> ")	...	...	30	do.	...	do.	...	18.0	{ 6.0 3.0 }	{ 6.0 }	{ 1.5 0.75 }	3.0 1.0	3.5 1.0	Vitamin "A" 6,000,000 1U/ton. Vitamin "D <sub>3</sub> " 600,000 1U/ton.
"D" Fattening Mash	...	...	68	MORLAY	...	R. B. Young Products	...	11.0	3.0	5.5	{ 2.0 0.25 }	3.0 1.0	4.0 1.5	...
H.P. Laying Mash Vitamised ("A" and "D <sub>3</sub> ")	...	...	72	do.	...	do.	...	20.0	3.0	5.5	{ 2.0 0.25 }	3.0 1.0	4.0 1.5	...
H.P. Laying Mash 20% Protein	...	...	73	do.	...	do.	...	20.0	3.0	5.5	{ 2.0 0.25 }	3.0 1.0	4.0 1.5	...
Laying Mash	...	...	74	do.	...	do.	...	16.0	3.0	5.5	{ 2.0 0.25 }	3.0 1.0	4.0 1.5	...
Laying Mash "A" and "D <sub>3</sub> " Vitamin Fortified	...	...	75	do.	...	do.	...	16.0	3.0	5.5	{ 2.0 0.25 }	3.0 1.0	4.0 1.5	"A" and "D <sub>3</sub> " .06
Hi-Protein Mash	...	...	76	WESFARMERS	...	Westralian Farmers Co-op., Ltd.	...	20.0	{ 10.0 6.0 }	{ 8.0 }	{ 0.5 0.1 }	5.0 4.0	2.5 1.5	...
Hi-Protein Pellets	...	...	77	RED COMB	...	do.	...	20.0	{ 10.0 6.0 }	{ 8.0 }	{ 0.5 0.1 }	5.0 4.0	2.5 1.5	Vitamin "A" 6,040 1U/lb. Vitamin "D <sub>3</sub> " 900 1U/lb. do.
Hi-Protein Mash "A" and "D <sub>3</sub> "	...	...	78	WESFARMERS	...	do.	...	20.0	{ 10.0 6.0 }	{ 8.0 }	{ 0.5 0.1 }	5.0 4.0	2.5 1.5	...
Hi-Protein Pellets "A" and "D <sub>3</sub> "	...	...	79	RED COMB	...	do.	...	20.0	{ 10.0 6.0 }	{ 8.0 }	{ 0.5 0.1 }	5.0 4.0	2.5 1.5	...
"P" All Mash	...	...	80	WESFARMERS	...	do.	...	16.0	{ 6.0 4.0 }	{ 7.0 }	{ 0.5 0.1 }	3.0 2.3	2.5 2.5	...

\* Minimum.



# STOCK FOODS—continued

Stock Food.	Applc. No.	Brand.	By whom Registered.	Materials from which Made.	Registered Analysis.						Other.
					Crude Protein.	Crude Fat.	Crude Fibre.	Sodium Chloride (NaCl).	Phosphoric Acid (P <sub>2</sub> O <sub>5</sub> ).	Calcium (Ca).	
<b>Compound Foods—contd.</b>					% (Min.)	% (Max.)	% (Max.)	% (Max.)	% (Max.)	% (Max.)	%
<i>Poultry Foods—contd.</i>											
All Mash Pellets ...	81	RED COMB ...	Westralian Farmers Co-op., Ltd.	Bran, pollard, rolled wheat, gristed oats, meat meal, or whole solubles, bone meal, oyster flour	16.0	{ 6.0 4.0*	7.0	{ 1.0 nil*	3.5 2.3*	2.5 2.0*	....
"P" All Mash "A" and "D <sub>3</sub> "	82	WESFARMERS	do. do.	Bran, pollard, rolled wheat, gristed oats, meat meal, or whole solubles, bone meal, oyster flour, vitamins A and D <sub>3</sub> do.	16.0	{ 6.0 4.0*	7.0	{ 1.0 nil*	3.5 2.3*	2.5 2.0*	Vitamin "A" 3,300 IU/lb. Vitamin "D <sub>3</sub> " 450 IU/lb. do.
All Mash Pellets "A" and "D <sub>3</sub> "	83	RED COMB ...	do. do.	Bran, pollard, oat meal, rolled wheat, meat meal	16.0	{ 6.0 4.0*	7.0	{ 1.0 nil*	3.5 2.3*	2.5 2.0*	....
Fattening Mash ...	90	WESFARMERS	do. do.	Bran, pollard, wheat, meat meal, whole meal, bone meal, shell	13.0	{ 6.0 4.0*	7.0	{ 1.0 nil*	1.2 0.7*	1.0 0.5*	....
Fattening Pellets ...	91	RED COMB ...	do. do.	Gristed wheat, bran, buttermilk, brewer's yeast, vitamin A and D <sub>3</sub> , meat meal, whole meal, bone meal, manganese, sulphate	13.0	{ 6.0 4.0*	7.0	{ 1.0 nil*	1.2 0.7*	1.0 0.5*	....
Cockeral Mash "A" AB ("A" and "D <sub>3</sub> ")	92	WESFARMERS	do. do.	Bran, pollard, rolled wheat, gristed oats, meat meal, or whole solubles, bone meal, oyster flour, vitamins A and D <sub>3</sub> do.	18.0	{ 5.0 3.0*	7.0	{ 1.0 nil*	2.0 1.0*	2.0 1.0*	Vitamin "A" 2,000 IU/lb. Vitamin "D <sub>3</sub> " 400 IU/lb. do.
Cockeral Mash "B" A and D <sub>3</sub>	93	"WES. FARMERS"	Westralian Farmers Co-op., Ltd.	Gristed wheat, bran, meat meal, meat meal, whole meal, bone meal, manganese, vitamins A and D <sub>3</sub>	18.0	{ 5.0 3.0*	7.0	{ 1.0 nil*	2.0 1.0*	2.0 1.0*	Vitamin "A" 2,000 IU/lb. Vitamin "D <sub>3</sub> " 400 IU/lb. do.
Cockeral Pellets "A" A, B, A and D <sub>3</sub>	94	do.	do. do.	Gristed wheat, bran, buttermilk, brewers yeast, meat meal, whole meal, bone meal, manganese sulphate, antibiotics, vitamins A and D <sub>3</sub>	18.0	{ 5.0 3.0*	7.0	{ 1.0 nil*	2.0 1.0*	2.0 1.0*	....
Cockeral Pellets "B" A and D <sub>3</sub>	95	do.	do. do.	Gristed wheat, bran, meat meal, whole meal, bone meal, manganese sulphate, vitamins A and D <sub>3</sub>	18.0	{ 5.0 3.0*	7.0	{ 1.0 nil*	2.0 1.0*	2.0 1.0*	....
Laying Mash ...	113	"PARSONS"	Parsons Pty., Ltd.	Bran, pollard, gristed grains, wheatgerm, whole meal and solubles, meat meal, oyster flour, bone meal, rock phosphate, salt	16.0	2.5*	6.0	{ 2.0 0.25*	3.5 1.0*	3.75 1.0*	....
Do. ...	114	"APEX"	E. J. Fry Pty., Ltd.	Wheat meal, bran, pollard, meat meal, whole meal, bone meal, oyster flour	16.0	3.0*	6.0	{ 1.0 0.25*	3.0 1.0*	3.0 2.3*	....
16% Protein Laying Mash No. 1 (All Mash)	127	THOMAS	W. Thomas & Co. (W.A.), Ltd.	Bran, pollard, gristed grains, wheatgerm, whole meal, salt, whole solubles or meat meal, oyster and bone flour, rock phosphate	16.0	2.5*	6.0	{ 2.0 0.25*	3.5 1.0*	3.75 1.0*	....
16% Protein Laying Pellets No. 1 (All Pellets)	128	Do.	do. do.	Bran, pollard, gristed grains, wheatgerm, whole meal, whole solubles or meat meal, oyster and bone flour, rock phosphate	16.0	2.5*	6.0	{ 2.0 0.4*	3.50 0.75*	3.75 1.0*	....
16% Protein Vitaminised Laying Mash No.1 (All Mash)	129	do.	do. do.	Bran, pollard, gristed grain, wheat germ, whole meal and solubles or meat meal, oyster and bone flour, rock phosphate, salt, lucerne meal, stabilised vitamins A and D <sub>3</sub>	16.0	2.5*	6.0	{ 2.0 0.5*	3.0 1.0*	3.75 1.0*	Vitamin "A" 6,000,000 IU/ton Vitamin "D <sub>3</sub> " 1,800,000 IU/ton















# STOCK FOODS—continued

Stock Food.	Applc. No.	Brand.	By whom Registered.	Materials from which Made.	Registered Analysis.						Other.
					Crude Protein.	Crude Fat.	Crude Fibre.	Sodium Chloride (NaCl).	Phosphoric Acid (P <sub>2</sub> O <sub>5</sub> ).	Calcium (Ca).	
<b>Compound Foods—contd.</b>					% (Min.)	% (Max.)	% (Max.)	% (Max.)	% (Max.)	% (Max.)	%
<i>Chick Foods—contd.</i>											
Concentrate for Chicks	176	CLARKS "CHECKER MIX"	Barrow Linton & Co. ...	Maize products, salt, limestone, meat, bone and blood meals, dried milk products, bone flour, dicalcic phosphate, manganese sulphate, vitamins A and D <sub>3</sub> , B <sub>12</sub>	42.0	{ 9.0 } { 8.0* }	2.0	2.5	7.5*	9.5*	...
Growers Mash	179	"CHECKER MIX" ROWELL	do.	Bran, pollard, wheat and barley meals, ground oats and Chequer Mix Concentrate for Growers	17.4	4.5	4.6	Trace	1.0*	Trace	...
Chick Starter	180	"CHECKER MIX" VITA-IVOR	do.	Bran, pollard, wheat and barley meals, ground oats and Chequer Mix Concentrate for chicks	20.0	4.3	4.4	Trace	1.0*	Trace	...
16% Protein Chick Pellet Ration 0-12 weeks	188	"DIVER HI-ENERGY"	W. Thomas & Co. (W.A.), Ltd.	Bran, pollard, fine gristed oats or barley, wheat, whole meal, dried, butter or skim milk, brewers yeast, bone flour, ribon, vitamins A and D <sub>3</sub> , manganese sulphate, liver meal, antibiotics	16.0	3.0*	7.0	{ 1.0 } { Nil* }	2.3 1.2*	1.3 0.8*	{ Vitamin "A" 6,000,000 IU/ton Vitamin "D <sub>3</sub> " 1,800,000 IU/ton Ribon 6 gms./ton Mn 33 p.p.m. Vitamin "A" 6,000,000 IU/ton Vitamin "D <sub>3</sub> " 4,800,000 IU/ton do.
15% Protein Chick Pellets Growers Ration 13-18 weeks	189	do.	do.	Bran, pollard, fine gristed oats or barley, wheat, salt, whole meal, bone flour, vitamins A and D <sub>3</sub> , manganese sulphate	15.0	3.0*	7.0	{ 1.0 } { Nil* }	2.3 1.2*	1.5 1.0*	{ Vitamin "A" 6,000,000 IU/ton Vitamin "D <sub>3</sub> " 1,800,000 IU/ton Ribon 6 gms./ton Mn 33 p.p.m. Vitamin "A" 6,000,000 IU/ton Vitamin "D <sub>3</sub> " 4,800,000 IU/ton do.
15% Protein Chick Pellets Growers Ration 13-18 weeks	190	do.	do.	Bran, pollard, fine gristed oats or barley, wheat, salt, whole meal, bone flour, vitamins A and D <sub>3</sub> , manganese sulphate	15.0	3.0*	7.0	{ 1.0 } { Nil* }	2.3 1.2*	1.5 1.0*	{ Vitamin "A" 6,000,000 IU/ton Vitamin "D <sub>3</sub> " 1,800,000 IU/ton Ribon 6 gms./ton Mn 33 p.p.m. Vitamin "A" 6,000,000 IU/ton Vitamin "D <sub>3</sub> " 4,800,000 IU/ton do.
Vitamins 16 % Chick Starter	195	"RICH FOODS"	A Richards & Co. ...	Bran, pollard, wheat meal, meat meal, buttermilk, yeast, oat meal, bone meal, micratized Vitamins A and D <sub>3</sub>	16.0	{ 5.0 } { 3.0* }	7.0	{ 1.0 } { Nil* }	3.0 1.0*	3.0 0.8*	{ Vitamin "A" 2,000 IU/lb. Vitamin "D <sub>3</sub> " 500 IU/lb. do.
15% Vitaminised Growers Mash	198	do.	do.	Wheat meal, meat meal, whole meal, bran and pollard, oat meal, bone meal, vitamins A and D <sub>3</sub>	15.0	{ 5.0 } { 3.0* }	7.0	{ 1.0 } { Nil* }	3.0 1.0*	3.0 0.8*	{ Vitamin "A" 2,000 IU/lb. Vitamin "D <sub>3</sub> " 500 IU/lb. do.
<b>6.—Turkey Foods.</b>											
Turkey Starter Mash	96	"WES-FARMERS"	Westralian Farmers Co-op., Ltd.	Bran, pollard, gristed oats, wheat, buttermilk, dried yeast, meat meal, bone meal, stabilised vitamins A and D <sub>3</sub>	24.0	{ 5.0 } { 3.0* }	7.0	{ 1.0 } { Nil* }	2.0 1.0*	2.0 1.0*	{ Vitamin "A" 4,000 IU/lb. Vitamin "D <sub>3</sub> " 600 IU/lb. do.
Turkey Starter Pellets	97	do.	do.	do.	24.0	{ 5.0 } { 3.0* }	7.0	{ 1.0 } { Nil* }	2.0 1.0*	2.0 1.0*	do.
Turkey Growers Mash	98	do.	do.	do.	20.0	{ 5.0 } { 3.0* }	7.0	{ 1.0 } { Nil* }	2.0 1.0*	2.0 1.0*	do.
Turkey Growers Pellets	99	do.	do.	do.	20.0	{ 5.0 } { 3.0* }	7.0	{ 1.0 } { Nil* }	2.0 1.0*	2.0 1.0*	do.
<b>7.—Pig Foods.</b>											
Pig Food	46	"EVE-LYN"	Tropical Traders & Patersons, Ltd.	Gristed wheat, barley and rye, pollard, salt, limestone, chalk sulphate, animal charcoal, sulphate iron, limonite, copper, coriander, arecaurate, foenugreek	5.0	1.0*	5.0	{ 9.6 } { 8.6* }	3.75 3.25*	9.5 8.3*	...



Pig Mash H.P.	66	"MORIAY"	R. B. Young Products ...	Pollard, rock phosphate, wheat meal, whole meal, meat meal, limestone	17-0	3-0*	6-0	{ 2-0 0-25*	3-0 1-0*	4-0 1-0*	...
Pig Mash Standard	67	do.	do.	do.	14-0	3-0*	6-0	{ 2-0 0-25*	3-0 1-0*	4-0 1-0*	...
Pig Mash	100	"WES-FARMERS"	Western Farmers Co-op, Ltd.	Bran, pollard, rolled wheat, meat and bone meal, limestone, copper	16-0	{ 7-0 5-0*	8-0	{ 2-0 0-25* 1-0*	3-0 3-5 2-3*	4-0 1-5* 2-5 2-0*	...
18% Protein Antibiotic Vitamised Pig Starter	143	"THOMAS"	W. Thomas & Co. (W.A.), Ltd.	Manganese, iodine, cobalt, vitamins A and D, pollard, wheat germ, gristled grains, meat or whole meal or solubles, oyster and bone flour or rock phosphate, salt, ribbon, penicillin	18-0	2-5*	6-5	{ 2-0 1-0*	3-75 1-0*	4-0 1-0*	{ 6,000,000 1U/ton Vitamin "A" 1,800,000 1U/ton Vitamin D <sub>2</sub> Manganese 60 p.p.m. Cobalt 3 p.p.m. Iodine 1-2 p.p.m. do.
18% Protein Antibiotic Vitamised Pig Starter Pellets	144	do.	do.	do.	18-0	2-5*	6-5	{ 2-0 1-0*	3-75 1-0*	4-0 1-0*	do.
18% Protein Antibiotic Vitamised Pig Grower	145	do.	do.	Manganese, iodine, cobalt, vitamins A and D, pollard, wheat germ, gristled grains, meat or whole meal or solubles, oyster and bone flour or rock phosphate, salt, Penicillin	16-0	2-5*	6-5	{ 2-0 1-0*	3-5 1-0*	4-5 1-0*	do.
18% Protein Antibiotic Vitamised Pig Grower Cubes	146	do.	do.	do.	16-0	2-5*	6-5	{ 2-0 1-0*	3-5 1-0*	4-5 1-0*	do.
14% Protein Pig Fat-tening Mash	147	do.	do.	Manganese, iodine, cobalt, pollard, wheat germ, gristled grains, meat or whole meal or solubles, oyster and bone flour or rock phosphate, salt ribbon	14-0	2-5*	6-0	{ 2-0 1-0*	3-75 1-0*	4-0 1-0*	{ Iodine 1-2 p.p.m. Cobalt 3-0 p.p.m. Manganese 60 p.p.m.
14% Protein Pig Fat-tening Cubes	148	do.	do.	do.	14-0	2-5*	6-5	{ 2-0 1-0*	3-75 1-0*	4-0 1-0*	do.
8-Horse Food	44	"EVE-LYN"	Tropical Traders & Patersons, Ltd.	Pollard, barley, gristled wheat, whole linseed, salt, chalk, iron, magnesium sulphate, sulphur, copper, sodium bicarbonate, med herbs	8-5	{ 3-0 2-0*	7-0	{ 5-0 4-5*	1-0 0-5*	1-75 0-75*	Sulphur 1-25
12% Protein Sweet Horse Food	151	"THOMAS"	W. Thomas & Co. (W.A.), Ltd.	Mill offal, grain meals, molasses, malt combings, bone flour, rock phosphate, oyster flour, salt, manganese sulphate, stabilised iodine, cobalt sulphate	12-0	1-5*	10-0	{ 2-0 1-0*	2-5 1-0*	4-0 1-0*	{ Iodine 1-2 p.p.m. Cobalt 3-0 p.p.m. Manganese 60 p.p.m.
9-Dog Foods.	3	"SNAPS"	Snaps Dog Foods	Wheat, bone meal and vegetables	15-0	{ 6-0 4-0*	2-0	{ 0-6 0-3*	4-0 3-0*	4-5 3-5*	Carbohydrates 62-00
Charcoal Shapes	4	do.	do.	do.	14-0	5-0	6-0	{ 0-7 0-4*	3-0 2-0*	3-0 2-0*	do.
Plain Shapes	5	do.	do.	do.	15-0	5-0	2-0	{ 0-7 0-4*	4-0 3-0*	do.	do.
No. 1 Dog Biscuits	6	do.	do.	do.	15-0	5-0	2-0	{ 0-7 0-4*	4-5 3-0*	4-5 3-5*	do.
Dog and Cat Food	33	"TUCKER"	Tucker Box Dog and Cat Food Co.	Meat and meat by-products, cereals, vegetables, salt	10-0	5-0	0-5	{ 1-0	...	...	...
Dog Meal A B (A and D <sub>2</sub> )	109	"WES-FARMERS"	Western Farmers Co-op, Ltd.	Bran, pollard, meat meal, dried yeast, buttermilk, bone meal, salt, antibiotics, vitamins A and D <sub>2</sub>	20-0	2-5*	5-0	{ 2-0 1-0*	2-5 1-0*	3-0 1-0*	{ Vitamin "A" 4,000 1U/lb. Vitamin "D <sub>2</sub> " 450 cu/lb. Vitamin "A" 6,000,000 1U/ton Vitamin "D <sub>2</sub> " 1,800,000 1U/ton
20% Protein Kanine Kibbles	152	"THOMAS"	W. Thomas & Co. (W.A.), Ltd.	Predigested cereal meals, wheat germ, grain meals, meat meal, milk powder, molasses, oyster flour, bone flour, salt, potassium iodide vitamins A and D <sub>2</sub> , B <sub>1</sub>	20-0	1-0*	2-5	{ 1-5 0-5*	2-5 0-5*	2-5 0-5*	...

\* Minimum.



**STOCK FOODS—continued**

Stock Food.	Applic. No.	Brand.	By whom Registered.	Materials from which Made.	Registered Analysis.											
					Crude Protein.	Crude Fat.	Crude Fibre.	Sodium Chloride (NaCl).	Phosphoric Acid (P <sub>2</sub> O <sub>5</sub> ).	Calcium (Ca).	Other.					
<b>C.—Stock Licks.</b>					% (Min.)	% (Max.)	% (Max.)	% (Max.)	% (Max.)	% (Max.)						
1.— <i>Bone Meal.</i>																
Whale Bone Meal	14	" WRIGHTS "	Wrights, Ltd.	Whale bone	8.5	...	...	1.0	27.0*	23.0*	Lime CaO 40%*					
Sterilized Bone Flour	20	TRI-CAL-OS	David Gelatine Pty., Ltd.	Bones	5.0	...	...	...	30.0*	...	do					
Sterilized Bone Grit	21	do.	do.	do.	5.0	...	...	Trace	30.0*	...	do					
Bone Meal	38	" ANCHO "	Anchorage Butchers Pty. Ltd.	Waste meat products	2.44*	...	Trace	...	26.76*	...	Lime CaO 26.95					
Do.	111	" W.A.M.E. "	W.A. Meat Export Works	Selected bones	18.75	...	...	0.25	26.0*	...	Lime CaO 27.0					
Do.	162	" WATSONS "	Watsons Foods Pty., Ltd.	Abattoir offal and bones	14.0	...	...	...	26.5*	...	Lime CaO 36.0					
2.— <i>Oyster Flour.</i>																
Oyster Flour	40	" DEANS "	J. Deane & Son	Oyster, shell and lime	...	...	...	0.5	Trace	...	Lime CaO 50.0					
Do.	154	" THOMAS "	W. Thomas & Co. (W.A.), Ltd.	Oyster, shell and lime	...	...	...	1.0	Nil	...	Lime CaO 42.0					
Registered Analysis.																
Stock Food.	Reg. No.	Brand.	By whom Registered.	Materials from which Made.	Sodium Chloride (NaCl).	Phosphoric Acid (P <sub>2</sub> O <sub>5</sub> ).	Lime (CaO).	Magnesia (MgO).	Iron (Fe).	Sulphur (S).	Iodine (Cu).	Copper (I).	Cobalt (Co).	Manganese (Mn).	Potassium (K).	Zinc (Zn).
3.— <i>Mixed Stock Licks.</i>					% (Max.)	% (Min.)	% (Min.)	% (Min.)	% (Min.)	% (Min.)	% (Min.)	% (Min.)	% (Min.)	% (Min.)	% (Min.)	% (Min.)
Denmark Cobalt Lick	2	" C.S.M.L. "	Cuming Smith Mount Lyell	Limonite, sulphate of copper, salt	38.0	...	...	...	...	...	...	0.14	20.0	...	(Limonite) 20.0	...
Sheep Lick	17	" DAVID GRAYS "	David Gray & Co., Ltd.	Sodium chloride, trace elements, bone meal, yeast	80.0	1.0*	5.0*	...	1.2	3.3	150	220	92	200	50	80
Cattle Lick	18	do.	do.	Sodium chloride and various trace elements	80.0	1.0*	5.0*	...	1.2	3.3	150	220	92	200	50	80
Mineralized Supplement for Stock	22	" RAWLEIGHS "	The T. W. Rawleigh Co. Ltd.	Salt, sulphur, copperas, sodium phosphate, potassium iodide, calcium carbonate, cobalt sulphate, defluorinated phosphate, mineral oil, molasses and drug mixtures	15.0	12.24*	27.0*	Calcium (Ca) 13.42	1,000 p.p.m.	3.5*	220 p.p.m.	...	10 p.p.m.	...	80 p.p.m.	70 p.p.m.
Poultry Powder Iodized	23	do.	do.	Oyster shell, sulphur, potassium iodide, copperas, iodine sulphate, ground bone, manganese sulphate, cobalt sulphate, zinc sulphate, quassin, defluorinated phosphate, mineral oils	16.5	38.7*	...	...	400 p.p.m.	4.0*	100 p.p.m.	40 p.p.m.	100 p.p.m.	120 p.p.m.	40 p.p.m.	100 p.p.m.



Rock Salt	...	43	"ELDERS" ...	Elder Smith & Co., Ltd.	Sodium chloride marl	...	...	...	...	...	Phenothia- zine 19.0*	...	...	...	...	...	...	...
Tri-ca-phene "B"	...	49	"BLUE PETER"	Agricultural Products Co.	Phenothiazine, ground limestone, limonite, copper carbonate, cobalt sulphate, manganese oxide	...	1.0	...	32.0*	...	2.9*	...	1,200* p.p.m.	224* p.p.m.	500* p.p.m.	...	...	...
Medicated Calcium	...	50	do.	do.	Ground limestone, limonite, copper carbonate, cobalt, sulphur, manganese oxide	...	1.0	...	45.0*	...	3.5*	...	1,500* p.p.m.	285* p.p.m.	600* p.p.m.	...	...	...
Medicated Salt Block "B"	...	51	do.	do.	Salt, ground limestone, limonite, copper, cobalt, sulphur, manganese	...	70.0	...	6.0*	...	1.5*	...	550* p.p.m.	95* p.p.m.	200* p.p.m.	...	...	...
Chic-a-vite	...	56	VITA-LICK	Goldsbrough & Co., Ltd.	Bone flour, bone charcoal, ferrous sulphate, flowers of sulphur, sodium sulphate, gentian, cod liver oil, potassium iodide, meal from rice	...	...	20.2*	25.9*	...	1.7*	...	Sodium Sulphate. 6.0*					...
Concentrated Lick	Cattle	58	do.	do.	Bone flour, bone charcoal, sodium sulphate, flowers of sulphur, limonite, potassium iodide, copper sulphate, cobalt chloride	...	...	28.2*	36.1*	...	3.5*	0.43*	0.2*	0.14*	...	...	...	...
Concentrated Lick "D"	Cattle	59	do.	do.	Bone flour, bone charcoal, sodium sulphate, flowers of sulphur, limonite, potassium iodide	...	...	30.0*	38.75*	...	1.25*	2.0*	0.17*	...	...	...	...	...
Concentrated "D" Cobaltised and Copperised	...	60	do.	do.	Bone flour, bone charcoal, sodium sulphate, flowers of sulphur, limonite, potassium iodide, cobalt chloride, copper sulphate	...	...	30.0*	38.75*	...	1.25*	2.0*	0.17*	0.2*	0.14*	...	...	...
Concentrated "G"	...	61	do.	do.	Bone flour, bone charcoal, limonite, potassium iodide, flowers of sulphur	...	...	28.75*	37.0*	...	3.5*	2.0*	0.17*	...	...	...	...	...
Concentrated "G" Cobaltised and Copperised	...	62	do.	do.	Bone flour, bone charcoal, limonite, potassium iodide, flowers of sulphur, copper sulphate, cobalt chloride	...	...	28.75*	37.0*	...	3.5*	2.0*	0.17*	0.2*	0.14*	...	...	...
Mineral Supplement for Pigs	...	63	"POR-CO-VITE"	do.	Bone flour, bone charcoal, sodium sulphate, flowers of sulphur, sodium chloride, limonite, calcium carbonate, copper sulphate, cobalt chloride, potassium iodide	...	14.0	19.14*	29.32*	...	0.62*	9.6*	0.052*	1.0*	0.003*	...	...	...
Mineral Food Supplement for Pigs	...	64	"WATKINS"	The J. R. Watkins Co.	Calcium carbonate, magnesium carbonate, dicalcic phosphate, bonechar, ferrie oxide, ferrous sulphate, magnesium sulphate, ground sulphur, salt, mineral oil, granulated manganese oxide, cobalt sulphate, copper sulphate, zinc sulphate and potassium iodide	...	10.5	15.0*	33.8*	0.5*	1.1*	...	0.153*	0.129*	0.1*	0.25*	...	0.01*
Mineral Food Supplement	...	65	do.	do.	Dicalcic phosphate, rock phosphate, calcium, magnesium sulphate, ferrie oxide, magnesium sulphate, ground sulphur, salt	...	9.0	15.5*	32.0*	0.7*	1.1*	...	0.176*	0.129*	0.1*	0.009*	...	0.011*
Sheep Lick	...	107	"WES-FARMERS"	Westralian Farmers Co-op., Ltd.	Bone meal, salt, yeast, iron sulphate, copper sulphate, cobalt chloride, manganese sulphate, potassium iodide, sulphur, zinc sulphate	...	80.0	1.0*	5.0*	...	1.2*	3.3*	150 p.p.m.	220 p.p.m.	200 p.p.m.	50 p.p.m.	80 p.p.m.	...
Cattle Lick	...	108	do.	do.	do.	...	80.0	1.0*	5.0*	...	1.2*	3.3*	150 p.p.m.	220 p.p.m.	200 p.p.m.	50 p.p.m.	80 p.p.m.	...

\* Minimum.



STOCK FOODS—continued

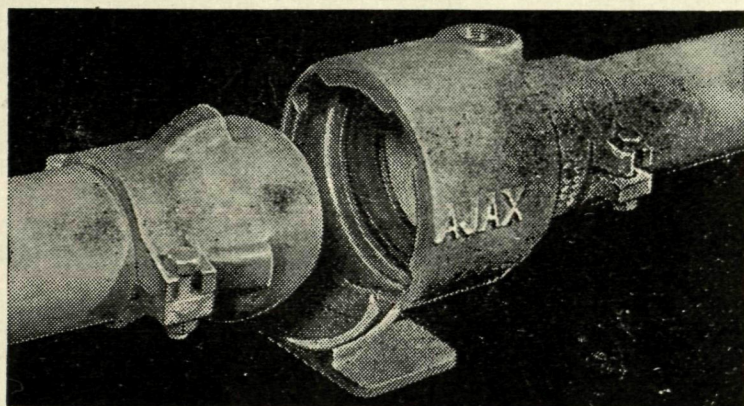
Stock Food.	Reg. No.	Brand.	By whom Registered.	Materials from which Made.	Registered Analysis.											
					Sod- ium Chlor- ide (NaCl)	Phos- phor- ic Acid (P <sub>2</sub> O <sub>5</sub> )	Lime (CaO).	Mag- nesia (MgO).	Iron (Fe).	Sul- phur (S).	Io- dine (I).	Cop- per (Cu).	Co- balt (Co).	Man- gan- ese (Mn).	Pot- assi- um (K).	Zinc (Zn).
<i>Mixed Stock Licks— continued.</i>					% (Max.)	% (Min.)	% (Min.)	% (Min.)	% (Min.)	% (Min.)	% (Min.)	% (Min.)	% (Min.)	% (Min.)	% (Min.)	% (Min.)
Stock Conditioner ...	119	"LUFF'S BLUE LABEL"	Stam Products ...	Yeast, maize oil, meal, caramel, oil of aniseed, boric acid, thiom- amine hydrochloride, salts of iron, copper, manganese, zinc and cobalt	Vitamin "B <sub>1</sub> " 29,700 IU/lb.	...	...	1.646 p.p.m.	Yeast, 1.73%	...	...	53.3 p.p.m.	49.6 p.p.m.	50.7 p.p.m.	...	56.4 p.p.m.
Phosphate Flour ...	155	"THOMAS"	W. Thomas & Co. (W.A.), Ltd.	Ground rock phosphate ...	...	38.0* 42.0*	...	...	...	...	...	...	...	...	...	...
Cattle Lick ...	158	"BOVEX"	Chemex Products ...	Salt, rock phosphate, cobalt chloride, copper sulphate, man- gane sulphate, iron and zinc oxide	75.0	4.0* 10.0*	...	0.73*	0.06*	...	...	0.06*	0.01*	0.05*	...	0.16*
Sheep Lick ...	159	"OVEX"	do. ...	do.	60.0	4.0* 10.0*	...	...	...	...	...	...	...	...	...	...
"G" Concentrated Sheep Lick	167	"VIC-LIC"	Wilcox Moffin, Ltd.	Bone char, iron, limonite, potassium iodide, copper car- bonate, cobalt chloride	1.0	28.0* 37.0*	...	5.3*	10*	...	...	0.08*	0.075*	0.06*	...	20*
Concentrated Cattle Lick	168	do.	do.	Bone char, iron, limonite, salt, potassium iodide	5.5	27.0* 36.0*	...	2.9*	...	...	...	...	...	...	...	...
"D" Concentrated Sheep Lick	169	do.	do.	Bone char, iron, limonite, sodium sulphate, copper car- bonate, cobalt chloride, potas- sium iodide	1.0	29.0* 38.0*	...	2.9*	...	...	...	0.75*	0.031*	...	...	...
Mineralised Salt Block	170	do.	do.	Salt, pulverised limestone, iron, limonite, epsom salts, molasses, bone char, potas- sium iodide	53.0	4.5* 19.5*	0.16*	1.25*	...	Mo- lasses, 3.0	...	...	...	...	...	...
V6 Vitamin Concentrate for Horses	184	DAY SON & HEWITT, LTD.	Boans, Ltd.	Vitamins "A," "B <sub>1</sub> ," "B <sub>2</sub> ," "D <sub>3</sub> ," "E <sub>1</sub> ," "E <sub>2</sub> ," "B <sub>12</sub> ," "B <sub>6</sub> ," "E <sub>3</sub> "	Vitamin "A" 1,000 I.U.	...	Vitamin "D <sub>3</sub> " 2,000 I.U.	...	Vitamin "B <sub>2</sub> " 3 Mgm.	...	Vitamin "B <sub>12</sub> " 8 Mgm.	...	Vitamin "B <sub>6</sub> " 10 Mgm.	...	...	...

\* Minimum.



# A J A X IRRIGATION EQUIPMENT

ARE  
YOU  
IN  
DOUBT ?



HERE  
IS  
THE  
ANSWER !

**THE MOST MODERN ROBUST LIGHTWEIGHT  
COUPLING COMBINING ALL THE GOOD  
FEATURES OF EXISTING COUPLINGS  
PLUS ADDITIONAL REFINEMENTS**

## **FEATURES**

- A. Can be coupled or uncoupled from the standing position at the point of balance.
- B. Extreme flexibility — 32 deg. at each joint — follows contours and around corners easily.
- C. Seals when pressure rises.
- D. Guaranteed to drain quickly instantly pressure drops.
- E. Any Pipe can be removed without disturbing the others.
- F. Designed not to leak, jam or wear.
- G. No Springs, Clamps, Clips or Latches.
- H. Can be readily attached to any standard aluminium pipe on your property, and is available to replace the old style couplings fitted with troublesome springs, latches or clips.
- I. May be used with any type of sprinkler.
- J. Available with Towing Skids, Wheels or Stands.
- K. This most economical Irrigation Coupling is now available from YOUR LOCAL HARDWARE STORE.

# **McPherson's**

**Ltd.**

**532 MURRAY STREET, PERTH.**

**BA9711**

**AND AT MELBOURNE, SYDNEY, ADELAIDE, BRISBANE**

Please mention the "Journal of Agriculture, W.A.," when writing to advertisers

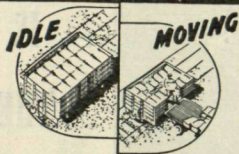


## PRIMARY PRODUCERS!

Railway wagons are **YOUR ASSETS**

**DON'T WASTE THEM**

*This **COULD** make the difference*



**KEEP THOSE WAGONS**  
*MOVING Thanks!*

Western Australian Government Railways

PROMPT LOADING and UNLOADING means quicker turnround of wagons.

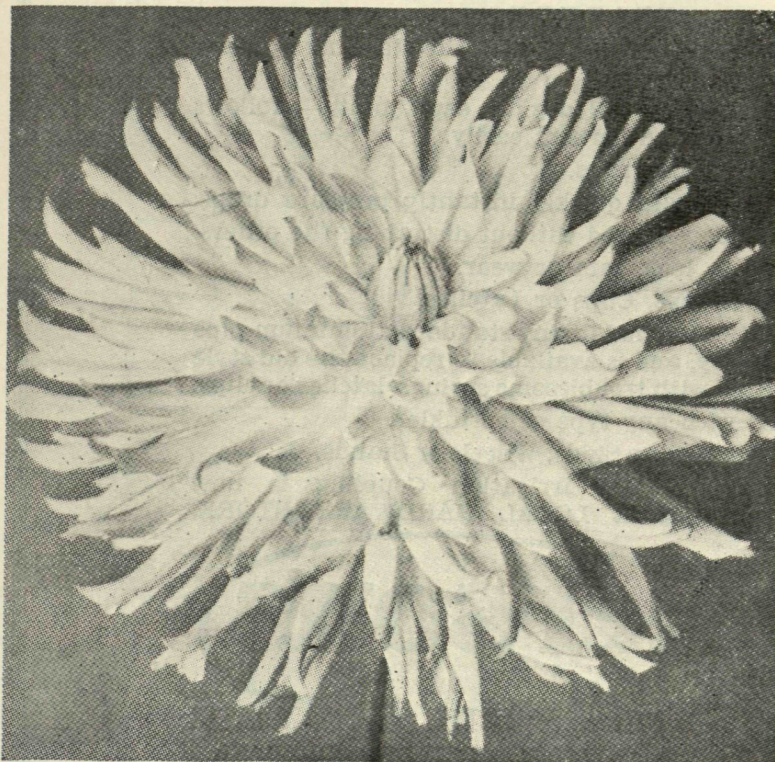
QUICKER TURNROUND means increased effective wagon loading capacity.

INCREASED CAPACITY means faster and better railway service for all.

BETTER SERVICE is our aim and your need. YOU CAN HELP yourself by helping Railways to keep the wagons moving.

- USE Government Railways Insured Parcels and Cash on Delivery Parcels systems
- ALSO, consign your goods at "Commission's Risk" and safeguard yourself

## WESTERN AUSTRALIAN GOVERNMENT RAILWAYS



## DAHLIAS

**BULBS AVAILABLE**

**OCTOBER TO DECEMBER**

Write for our Special List  
also our General Catalogue,  
both of which are free and  
Post Free

**WILSON & JOHNS  
PTY. LTD.**

74 BARRACK ST., PERTH  
102 HIGH ST., FREMANTLE

**SPECIALIST  
NURSERYMEN AND  
SEEDSMEN**

Note our new City Telephone  
Number BF 3048—3 lines.  
Fremantle as usual L 2447

Please mention the "Journal of Agriculture, W.A.," when writing to advertisers