



Department of
Primary Industries and
Regional Development

Digital Library

All other publications

Miscellaneous works

1999

Agwest revegetation monitoring activity: evaluation 1999

Caroline Hatherly

Department of Agriculture and Food, Western Australia

Follow this and additional works at: <https://library.dpird.wa.gov.au/pubns>



Part of the [Environmental Indicators and Impact Assessment Commons](#), and the [Environmental Monitoring Commons](#)

Recommended Citation

Hatherly, C. (1999), *Agwest revegetation monitoring activity: evaluation 1999*. Department of Agriculture, Perth. Report.

This report is brought to you for free and open access by the Miscellaneous works at Digital Library. It has been accepted for inclusion in All other publications by an authorized administrator of Digital Library. For more information, please contact library@dpird.wa.gov.au.

AGWEST REVEGETATION MONITORING ACTIVITY

EVALUATION 1999



By

Caroline Hatherly

HIGH RAINFALL LAND MANAGEMENT PROJECT
AGRICULTURE WESTERN AUSTRALIA



Background

During May 1999, an evaluation on the Agriculture Western Australia (AGWEST) Revegetation Monitoring Activity was undertaken. The evaluation was designed to track how the Land Conservation District Committees (LCDCs) in the Peel Harvey Catchment utilised the AGWEST Revegetation Monitoring Activity, and to determine if AGWEST's objectives of the project were being met. It also gave the community a chance to provide feedback on their experiences with the Monitoring Activity, and suggest future changes.

The survey concluded that the AGWEST Revegetation Monitoring Activity was used by LCDCs as a valuable tool for recording, monitoring and planning landcare projects. However, the process for obtaining information from the LCDC/Landcare groups and the support provided by AGWEST needs refinement.

This report will look at the results of the survey and put forward recommendations which aim at improving the AGWEST Revegetation Monitoring Activity in the future.

Methodology

The evaluation involved a survey of 8 questions (appendix 1) sent to each LCDC member in the Peel Harvey Catchment (Coolup LCDC, Harvey River LCDC, Dandalup/Murray LCDC and Serpentine Jarrahdale LCDC). The questions were structured so they were simple to answer whilst still allowing the participants to provide feedback.

Each question was analysed and the answers compared to determine the strengths and weaknesses of the Monitoring Activity. A majority of the questions were answered by using a rating system from 1 to 5, followed by a section for written comments.

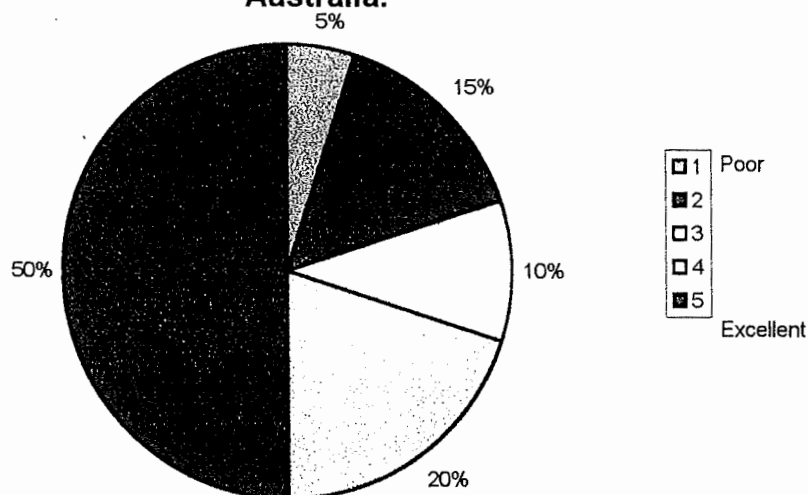
Statistical analysis of the evaluation has been kept very simple, with basic percentages and totals being determined.

Results and Outcomes

Of the 63 surveys sent to the LCDC members in the Peel Harvey Catchment, 20 were completed. Overall each participant rated the AGWEST Revegetation Monitoring Activity as a valuable tool for monitoring landcare activities within their LCD.

The survey established that the AGWEST activity was useful for monitoring landcare activities within each LCDC. A total of 50% rated the activity as being extremely useful (5 rating). This decreased to 5% of the participants rating the activity as 1, not useful (Fig 1)

Figure 1: The usefulness of AGWEST Revegetation Monitoring Activity in the Peel Harvey Catchment, Western Australia.

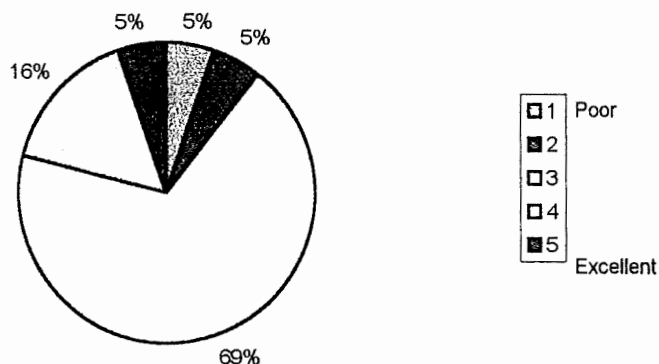


Individual recording of revegetation activities by each group member resulted in a dispersed outcome with no trend emerging. Landcare group recording was definitely more useful with 85% of the participants rating this method above 3. Again this was the trend with LCDC/landcare group recording with 90% of the participants rating this method above 3.

The AGWEST Revegetation Monitoring Activity was used by the LCDCs primarily for highlighting of landcare achievements (80%-5 rating) and recording the amount of capital input into landcare activities (85%-5 rating). AGWEST will aim at helping the LCDCs to also use the Monitoring Activity for future strategic planning.

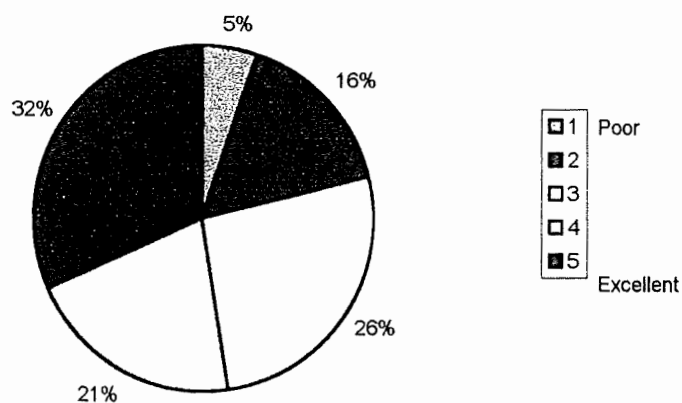
The process undertaken by AGWEST for the gathering of data on LCDC revegetation projects seems to need further refinement. Approximately 69% of the participants rated this process as satisfactory (3 rating), with 5% rating the process as very efficient (5 rating), and 5% as inefficient (1 rating) (Fig 2).

Figure 2: The process undertaken by AGWEST for the gathering of data on revegetation projects in the Peel/Harvey Catchment, Western Australia.



The level of information/support given by AGWEST in relation to the Monitoring Activity was positive. A total of 79% of the participants seemed satisfied with the level of information/support, and only 21% not satisfied (Fig 3).

Figure 3: The level of information/support given by AGWEST regarding the AGWEST Landcare Monitoring Activity in the Peel/Harvey Catchment, Western Australia



Overall 74% of the participants rated the AGWEST Revegetation Monitoring Activity as being the most efficient method of recording landcare projects and all agreed that it was of value to their LCDC.

The only areas of concern from this evaluation relate to:

- Only 20 surveys returned out of 63 requests for information; and
- Even though some refinements in the gathering of information are implied by the data, no concrete suggestions for improvements were received.

Conclusion

The survey concluded that the AGWEST Landcare Monitoring Activity was used by LCDCs as a valuable tool for recording, monitoring and planning landcare projects. However, the process for obtaining information from the LCDC/Landcare groups and the level of support provided by AGWEST needs further refining.

From the survey AGWEST was able to make several recommendations for the future of the Monitoring Activity. This aims to improve the process for gathering information and increasing the interaction between AGWEST staff and LCDC members in the Peel Harvey Catchment. A focus on strategic planning of landcare activities will also be emphasised by AGWEST.

The success of the AGWEST Revegetation Monitoring Activity has been investigated by other community groups in the South West. Consequently AGWEST is looking at extending the Monitoring Activity into other nearby catchments to provide a standardised and community accepted method for monitoring landcare activity in the region.

Recommendations

These recommendations have been put together by input from the evaluation process and the resources available from AGWEST.

Recommendation 1: Ensure through LCDCs that a standardised method for monitoring landcare activities in the Peel Harvey Catchment is adopted by all subsidiary landcare groups.

Recommendation 2: To investigate including other landcare activities, besides revegetation, into the monitoring framework

Recommendation 3: LCDCs could use this project to set areas for landcare priority for each LCDC and create achievable targets.

Recommendation 4: Increase the level of support/information for landcare groups regarding AGWEST Landcare Monitoring Activity.

Recommendation 5: Increase the interaction and information base between AGWEST staff and LCDCs regarding the AGWEST Landcare Monitoring Activity.

Recommendation 6: To promote the AGWEST Landcare Monitoring Activity as a means for strategic planning of future landcare projects.

Appendix 1 – Evaluation Survey 1999

1. Are you aware that AGWEST records landcare group/LCDC progress through computer mapping of landcare projects such as streamlining and revegetation?

☐ Yes

☐ No

2. What is the most useful method for monitoring landcare activities within your landcare group/LCDC? Please rate the monitoring methods below from 1 - not useful, to 5 - extremely useful (please circle).

AGWEST landcare monitoring activity 1-----3-----5

Individual recording by each landcare group member 1-----3-----5

Group recording by the landcare group 1-----3-----5

Recording by the landcare group and LCDC 1-----3-----5

Other (please specify) 1-----3-----5

3. What areas do you believe that AGWEST landcare monitoring activity is useful in your landcare group/LCDC ? Please rate each answer below from 1 - not useful, to 5 - extremely useful (please circle).

Future planning of LCDC projects 1-----3-----5

Past recording of LCDC projects 1-----3-----5

Assess the impact LCDC projects on the environment 1-----3-----5

A way of highlighting landcare achievements 1-----3-----5

To record the amount of capital input into landcare projects and document where funding is being utilised. 1-----3-----5

To record landcare activities at an individual level 1-----3-----5

Other (please specify) 1-----3-----5

4. How would you rate the process undertaken by AGWEST for the gathering of data on landcare projects (please circle)?

1	2	3	4	5
AGWEST's process for collecting landcare data was inefficient		AGWEST's process for collecting landcare data was satisfactory		AGWEST's process for collecting landcare data was very efficient.

Comments:

5. How would you rate the level of information/support given by AGWEST in relation to the AGWEST landcare monitoring activity in your Landcare group/LCDC (please circle)?

1	2	3	4	5
No support/information		Supportive, some information provided.		Very supportive and informative

Comments: _____

6. Do you believe that AGWEST landcare monitoring activity is the most efficient method of recording your landcare achievements?

☐ Yes☐ No (please specify)

7. Do you believe that the AGWEST landcare monitoring activity is of value to your landcare group/LCDC?

☐ Yes☐ No

8. Can you suggest ways to improve on the AGWEST landcare monitoring activity to make it more useful to your landcare group/LCDC.

This image shows a single sheet of white paper with horizontal blue or grey ruling lines. The lines are evenly spaced and run across the width of the page. There are approximately 20 lines visible. The paper appears to be a standard notebook page.