



Department of  
Primary Industries and  
Regional Development

Digital Library

---

Legume Logic

Grain and other field crop research

---

8-2000

## Legume Logic Number 120

Follow this and additional works at: <https://library.dpird.wa.gov.au/newslegume>



Part of the [Agribusiness Commons](#), and the [Agronomy and Crop Sciences Commons](#)

---

### Recommended Citation

(2000), *Legume Logic Number 120*. The Grain Pool of W.A., Perth. Book.

This book is brought to you for free and open access by the Grain and other field crop research at Digital Library. It has been accepted for inclusion in Legume Logic by an authorized administrator of Digital Library. For more information, please contact [library@dpird.wa.gov.au](mailto:library@dpird.wa.gov.au).



# LEGUME LOGIC

Global Vision, Local Focus

Editor: Peter Nelson  
Print Post Approved 602669/00324

Number 120

ISSN 1440-7930

## Lupin/Legume Logic Turns Ten

We're celebrating a birthday! We celebrate a decade of producing Lupin/Legume Logic with this our 120th issue.

The newsletter started as Lupin Logic in July 1990 and has only missed two issues since that time.

In February 1998, we introduced the new title of "Legume Logic" so that we could get you more information on a wider range of crops marketed by us.

We want to keep you up-to-date on pulse industry developments and signals in market prices.

My favourite story, and one that hit headlines around the world, was the article by 11 year old Sarah Nock of Tammin about the effect of music on lupin growth.

Sarah, now 18, is studying for an arts degree at the University of Western Australia.

After the article was published it was broadcast on BBC London and on radio stations Australia-wide.

The TV programme Real Life took rock band Rawkus to Tammin for Sarah and her father Cliff to dance to in a lupin crop. This was pictured on the front page of the Sunday Times!

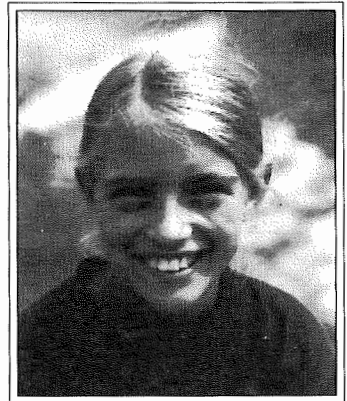
We revisit the original story adjacent.

## Beethoven not good enough!

Sarah Nock of Tammin has shown some lateral thinking in lupin production techniques. Below is a copy of the letter from Sarah to the Department of Agriculture in Northam.

Sarah we congratulate you on your scientific approach to this problem and look forward to receiving yield results.

Perhaps Julie Andrews rendering of "The air is alive to the sound of music" may become a reality in the West Australian wheatbelt!



Sarah Nock

Dear Ag Department of Northam,  
In a competition for school we had to complete an investigation. I investigated Does music help lupins to grow? I hope you find my research useful and in my own interest I'm going to test wheat as well.  
Yours sincerely

Sarah Nock  
(Age 11)

For 10 minutes every day I played Heavy Metal music to some lupins, Classical music and Nothing. The lupins which listened to Heavy Metal grew the tallest, Classical 2nd, and the lupins which didn't listen to any music barely grew at all! When farmers are passing a paddock of lupins, let the window down and turn up some AC/DC, Nirvana or Guns N' Roses music.

Thankyou for your time.

## Southern Pulse Group

More than 50 people inspected legumes on Doug and Debbie Clarke's property at Lake Grace recently to see commercial and experimental plantings. Peas sown in mid June were at the six leaf stage and looked very impressive.

Nyabing pulse grower Maurie Collins is president of this group and informed us that CBH had agreed to take peas at the Pingrup receival point this year.



*Maurie Collins (right) pictured with Neil Brandon of AGWEST Katanning in a young field pea crop on the Clarke's property.*

## Pulse Points

WA is not alone in experiencing pulse production problems.

- Canada's chickpea sowings have increased substantially but bad weather conditions and disease are hampering yield and quality potential.
- However, good Indian sub-continent demand is expected for new season pulses as Turkey and Syria are experiencing drought in their major chickpea growing regions.
- These markets combined with the Indian subcontinent's crop hold the key to where prices go later this year and will continue to be monitored.
- The Indian chickpea crop is sown in Oct/Nov and harvested in Feb/March.

## Lupin Pools

The 1999/00 season lupin pool indicator is at \$155-165 with a \$15/tonne payment predicted for August 31.

Current estimates for the new season are up slightly at \$165-175, based on the weak Australian dollar and anticipated reduced supply.

## Pulse Marketer on the Move

Troy Lyon is leaving us to join Canadian grain trader Xcan Grain Pool Ltd in Sydney.

Troy has been of enormous value to WA's pulse industry, making significant inroads to world markets for our products and we wish him well with his future endeavours.

## Belara and Aphids

John Gladstones:

"Your eastern wheatbelt informant is correct, and the advice given in The Crop Variety Sowing Guide is wrong.

As Belara's breeder, I can vouch that it is moderately susceptible to aphids (though much less so than its Yorrel parent), and that under the right conditions they can build up to damaging levels.

Far from saying it should not be sprayed, the advice should be to spray if at all needed, so as to benefit from its full yield potential. The alternative is to grow Tanjil, which has excellent aphid resistance and also does well in the eastern wheatbelt.

May I take the opportunity to correct a further piece of official misinformation about Belara. The sowing guide states that: "Seed decay due to *Phomopsis* infection may result in discoloured seeds in some environments", implying a potential problem comparable to that (rightly) noted for Myallie, Tallerack and Quilnock.

I can confidently say that this statement is misleading. While not as resistant to such infection as Yorrel, Merrit, Wonga and Tanjil, it is superior to Gungurru and Kalya and especially Danja and the other three varieties mentioned."

*I think this letter resolves the issue.*

EDITOR

DISCLAIMER Articles submitted, information provided and views expressed in this publication are those of the contributing authors and not those of the publishers.

No representation is given, assurance made or responsibility taken as to the accuracy, completeness, appropriateness or validity of any information contained in this publication and neither the publishers nor their offices and employees will be liable on any account whatsoever (including negligence, defamation or otherwise for any loss or damage arising as a result of the inclusion of or any reliance on any such information - except in so far as any liability cannot be excluded by law) and both contributors and readers must make and rely wholly on their own enquiries and judgement.