



Department of
Primary Industries and
Regional Development

Digital Library

Regional profile

Regional development

8-2018

Wheatbelt: A regional profile

Department of Primary Industries and Regional Development, Western Australia

Follow this and additional works at: https://library.dpird.wa.gov.au/rd_profile

Recommended Citation

Department of Primary Industries and Regional Development, Western Australia. (2018), *Wheatbelt: A regional profile*. Department of Primary Industries and Regional Development, Perth. Book.

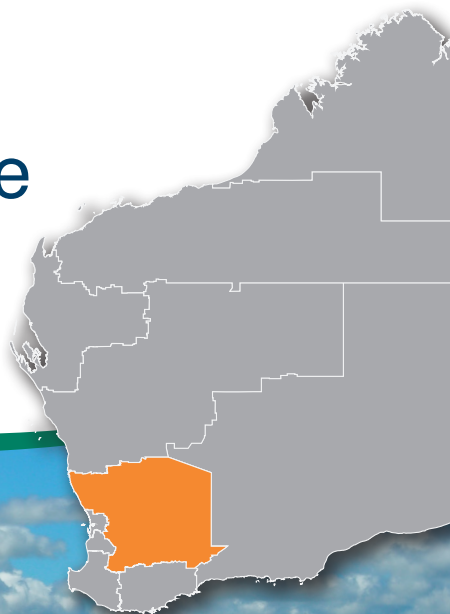
This book is brought to you for free and open access by the Regional development at Digital Library. It has been accepted for inclusion in Regional profile by an authorized administrator of Digital Library. For more information, please contact library@dpird.wa.gov.au.



Department of
**Primary Industries and
Regional Development**

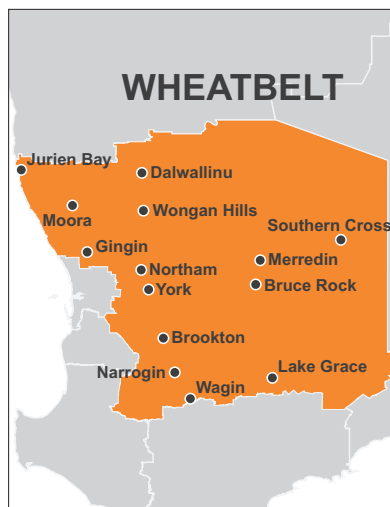


Wheatbelt: A regional profile



The Wheatbelt comprises an area of 156,711 square kilometres across 42 local government authorities.

The Shire of Northam is the largest regional centre with population distributed throughout the region. The Wheatbelt is renowned for wildflower displays and offers a variety of attractions and activities including self-drive trails, granite outcrops, fauna and walking trails. Situated close to Perth, the Wheatbelt is recognised as a popular tourist destination. Two of the state's most significant transport routes - the Great Eastern and Great Northern highways pass through the region, essentially linking Perth to the north of Western Australia and east coast of Australia.



The Wheatbelt has a rich agricultural history and the economy is built on this primary industry. The Wheatbelt's agricultural industry is the State's main producer of cereal crops and contributes other products such as canola, olives, vegetables, wine grapes, honey, citrus fruits and livestock. The economy however is now diversifying with its strong mining and mineral processing with gold, nickel and iron ore deposits across the region along with retail trade, construction and fisheries outputs also supporting the economy.

Facts



World leading producer of export commodities (grain, livestock and resources)



Has significant **affordable freehold land**



Possess **significant fundamental infrastructure** (power, water, telecommunications, community)



Largest producer of alternative energy generating over 50% of the State's renewable energy from wind farms



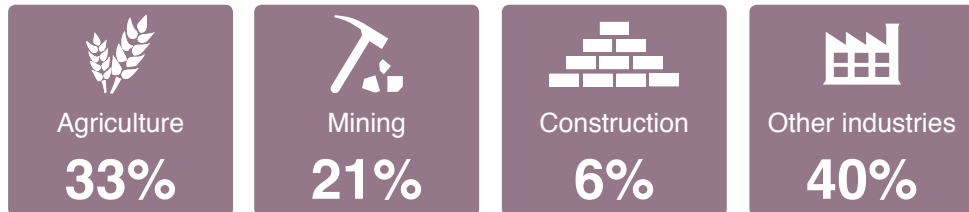
Hosts a **developed transport network** (road, rail, air)



Attractive to visitors for nature based, adventure and aviation tourism

Figures

Economic



Source: DPIRD 2017 Gross Regional Product (GRP); ABS State Accounts (5220.0); ABS 2016 Census data.

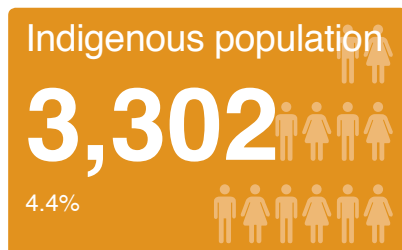
Employment



\$33,800 – \$41,599

94% Employment rate

Community



Source: Australian Bureau of Statistics (ABS) 2016 Census of Population and Housing



For further information on the Wheatbelt, contact:

**Wheatbelt Development Commission –
Department of Primary Industries and Regional Development**

75 York Road, Northam WA 6401

Phone: +61 8 9622 7222 | Email: info@wheatbelt.wa.gov.au | Website: wheatbelt.wa.gov.au

Important disclaimer

The Chief Executive Officer of the Department of Primary Industries and Regional Development and the State of Western Australia accept no liability whatsoever by reason of negligence or otherwise arising from the use or release of this information or any part of it.

© Department of Primary Industries and Regional Development, 2018