



Department of  
Primary Industries and  
Regional Development

Digital Library

---

Newsletters

Regional development

---

12-2015

## In Your Region December 2015

Department of Primary Industries and Regional Development, Western Australia

Follow this and additional works at: [https://library.dpird.wa.gov.au/rd\\_newsletters](https://library.dpird.wa.gov.au/rd_newsletters)

---

### Recommended Citation

Department of Primary Industries and Regional Development, Western Australia. (2015), *In Your Region December 2015*. Department of Primary Industries and Regional Development, Perth. Book.

This book is brought to you for free and open access by the Regional development at Digital Library. It has been accepted for inclusion in Newsletters by an authorized administrator of Digital Library. For more information, please contact [library@dpird.wa.gov.au](mailto:library@dpird.wa.gov.au).



# IN YOUR REGION

Edition 17 – 2015



*Allied health department,  
photo courtesy of WA Country Health Service*

## Better hospital services for the Goldfields

More than 56,000 Goldfields residents will now have greater options for contemporary health care services within their region.

The final clinical phase of the \$59.6 million redevelopment of the Kalgoorlie Health Campus was officially opened on Friday 28 August 2015.

The improved facilities offer access to enhanced diagnostic, acute and outpatient clinical health care services for the Goldfields community. The health campus is also utilised by a large number of fly-in-fly-out workers.

The State Government's Royalties for Regions program, State Infrastructure Strategy and Commonwealth Health and Hospitals Fund have invested \$15.8 million, \$40 million and \$3.8 million respectively.

WA Country Health Service Goldfields Regional Director Geraldine Ennis said the redevelopment was phased over six years

to ensure patients had continued access to health services.

"Some supporting and external aspects of the hospital, such as expanding the car park and upgrading the paging system, are still under way and are scheduled for completion in 2016," Ms Ennis said.

The latest works complement earlier phases of the redevelopment which included a palliative care unit, new emergency department, high dependency unit and medical imaging department.

Below is a quick breakdown of the works to the campus.

- Forward Works Package : new emergency generators and civil works
  - Completed in 2009
- Phase 1 : new palliative care unit
  - Completed in 2010
- Phase 2 : new emergency department, high dependency unit and new medical imaging department
  - Completed in 2012
- Phase 3 : refurbishment of an existing

block to house new Cancer Centre, Specialist Outpatient Centre, Medical Records and Health Information department, and associated facilities

- Completed in 2015

- Phase 4 : expansion of site car parking facilities and upgrade of the site's paging system
  - For completion in 2016

Ms Ennis was pleased that the Kalgoorlie Health Campus will now enable the increased use of the Telehealth Service and provide additional facilities to visiting clinicians.

---

*"The use of innovative design and modern technology has provided a modern facility that allows people to stay closer to home and still have access to the best clinical treatment," Ms Ennis said.*

---

"It is important we are equipped to cater for the region's growing demand."

The 130-bed inpatient facility is one of the largest regional public hospitals in Western Australia.



## DG Message

Welcome to the final edition of the *In Your Region* newsletter for 2015.

It has been another busy and productive year in regional development with a great deal of hard work going into the delivery of economic and social development outcomes across our State's nine regions.

The Department of Regional Development in partnership with the nine Regional Development Commissions are committed to a substantial review of our business strategy and operations to deliver even greater value for regions and the State in the future.

The regional development portfolio will place greater emphasis on establishing the pre-conditions for economic development and driving growth and new investment in the regions.

This edition provides a snapshot of what is happening in your region, and I encourage you to visit our website to find out more. You can also stay up to date with what is happening in the regions via our Facebook and Twitter pages.

I would like to thank all our partner agencies and industry and community stakeholders for the support and commitment throughout the year. I look forward to our continued engagement in 2016.

On behalf of everyone in the regional development portfolio, I wish all readers a very happy and safe festive season.



Ralph Addis  
Director General

## Showcasing Amazing Albany: 10 Great Rides

Western Australia's Great Southern offers some amazing cycling destinations that explore isolated unspoiled beaches, majestic harbours, rugged coastline, native bushland and nature reserves.



Minister Nalder, Carl Beck Vice President Albany Cycling Club, Pam Dolley Project Manager with members of the Albany cycle community, photo courtesy of the City of Albany

10 Great Rides is a free guide promoting ten of the most spectacular road cycle routes for leisurely touring, as well as more challenging road bike rides in Albany.

*This high quality map was developed by the Albany Cycling Club and contains a wealth of easy-to-use information about the best 10 on-road rides in Albany in a compact pocket sized format.*

The guide was made possible by a \$20,000 investment from the Great Southern Development Commission through the State Government's Royalties for Regions Community Chest Fund and \$5,000 plus in kind support from the City of Albany.

Find *Amazing Albany: 10 Great Rides* and additional information at [www.amazingalbany.com.au](http://www.amazingalbany.com.au)

## China trip encourages continued investment into WA from nearby Asia

Department of Regional Development Director General Ralph Addis recently accompanied Minister for Regional Development Terry Redman on a trip to China and Hong Kong for a series of meetings to continue driving Asian investment into regional Western Australia.

They attended a signing ceremony of the formal Aboriginal Development Package Agreement between Kimberley Agricultural Investment Pty Ltd (KAI) and Miriwung and Gajerrong (MG) Corporation. The landmark agreement supports one of Australia's most important developments in the north, the Ord-East Kimberley Expansion Project.

Mr Addis said this was a very exciting and significant milestone for the State Government and an opportunity to build on partnerships with KAI and MG Corporation.

"The agreement enables the development of the 6,000 hectare Knox Plain for irrigated agriculture to continue expanding the Ord," Mr Addis said.

*"The agreement ensures traditional owners will get 680 hectares of fully developed, freehold farmland in Ord Stage 2 so that they can be a part of the growing agricultural economy."*

Building on a similar trip last year, a meeting was also held with senior management of Shanghai Zhongfu (Group) Co Ltd to discuss the progress of the Ord project and further develop existing and potential trade and investment relationships between Western Australia and China.

Another key meeting was held with Chinese multinational networking and services company Huawei, the largest telecommunications company in the

world. Huawei established an Australian headquarters in 2004 to work with major telecommunications operators including Vodafone, Optus, Telstra, vividwireless, AAPT and Primus. Talks are currently underway to consider the establishment of a Mining Telecommunications Research and Development Centre in Western Australia.

Mr Addis said although there has been a drop in China's demand in iron ore, which has greatly affected WA's mining industry, the growth of China's economy will continue and investors are increasingly looking to invest in overseas markets.

"Geographically, we are ideally located to capitalise on this investment and discussions are continuing with Chinese investors about new opportunities that will support our economic development initiatives to ensure Western Australia has vibrant regions with strong economies," Mr Addis said.



Minister Terry Redman at the landmark signing



## Regional Grants Scheme

Local communities across all nine regions of Western Australia are benefiting from the State Government's 2014 – 2015 Regional Grants Scheme (RGS) round.

This round of RGS invested in 86 projects throughout regional WA, focusing on projects that help attract investment, increase job opportunities and assist in improving the quality of life in the regions.

The scheme provides an opportunity for regional communities to improve and develop infrastructure and services across the State.

RGS is administered by each of the nine Regional Development Commissions and is made possible through an investment of \$9 million from the State Government's Royalties for Regions program.

For a full list of supported projects visit [www.drd.wa.gov.au](http://www.drd.wa.gov.au)

### New St John Ambulance and Volunteer Training Sub Centre

Emergency facilities in Carnarvon will soon be upgraded to cater for the growing population.

The new facility will include:

- a large multi-use training centre
- seven bay garage to store ambulances
- administration area adjacent to community paramedic office/debrief area
- secure store room for medical supplies and equipment
- parking amenities.

St John Ambulance Project Officer Mark Tap said there is a pressing need for a new facility to meet current and future demands for emergency services in Carnarvon.

"The new centre will enable us to maintain an optimum level of service to accommodate the expanding community," Mr Tap said.

"We are working closely with the Shire of Carnarvon and community members to deliver this fundamental service."

The new training centre will allow the ongoing training of volunteers which equips them with the necessary basic and intermediate life support skills to assist them in stabilising patients on route to hospital.

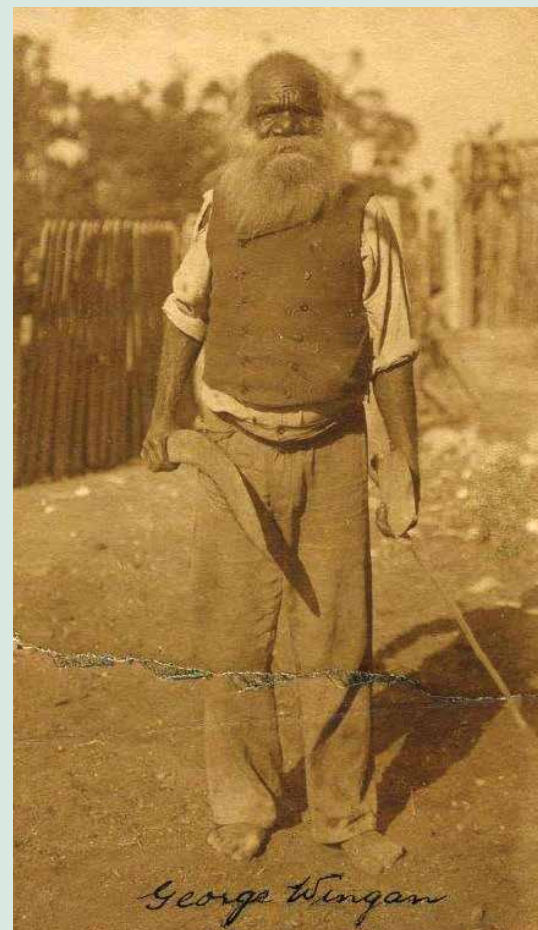
"St John volunteers play a vital role in providing high quality ambulance services and pre-hospital care to the community," Mr Tap said.

*"A suitable training environment is essential to ensure our volunteers feel comfortable, confident and ready for the road."*

The new St John Ambulance and Volunteer Training Sub Centre has received an investment of \$205,000 through the State Government's Royalties for Regions Regional Grants Scheme and \$205,000 by LotteryWest. Also local fundraising from the Carnarvon community has assisted this project become a reality.

The centre is scheduled to be completed in March 2016.

**Yaburgurt Public Art Project**  
Mandjar Square in Mandurah will soon be home to a public artwork honouring significant local Aboriginal leader Yaburgurt (George Winjan) and his life, character, essence and legacy.



Yaburgurt Memorial Project Image, photo courtesy of the City of Mandurah



Peter Farmer Little Rhino Designs September 2015 Artist Impression, photo courtesy of the City of Mandurah

George Winjan was and still is a significant figure in the Aboriginal community, representing a time of major change in Australia's history and a symbol of reconciliation.

The 3.5 metre high spherical artwork will be installed within the year to commemorate the 100th anniversary of his death.

Nyoongar artist Peter Farmer and Little Rhino Designs have been selected to deliver the artwork and aim to break down barriers and create better cultural understandings through their design.

"The work represents an infinite shape, one with no beginning or end, a constant journey, not just inclusive of the Aboriginal and non-Aboriginal communities, but that of all communities throughout the world," Mr Farmer said.

Mayor Marina Vergone said the City of Mandurah was very excited to have received the \$190,000 Royalties for Regions investment to bring the significant project to life.

"In working with Peter Farmer and Little Rhino Designs, the City will celebrate, nurture and respect Aboriginal culture and history of the Bindjareb people through the creation of this art piece," Mayor Vergone said.

*"The City was excited to work with a Project Group including Elders to progress this project, as the artwork will connect residents and visitors to Mandurah's diverse history and heritage demonstrating the unique characteristics of the area."*

The Yaburgurt Public Art Project has received an investment of \$190,000 through the State Government's Royalties for Regions Regional Grants Scheme.

## Pilbara Regional Investment Blueprint launched at CEDA

The Pilbara Regional Investment Blueprint (Pilbara Blueprint) was officially launched at the Committee for Economic Development of Australia's (CEDA) Future of the Pilbara forum in Karratha in October by Terry Redman, Minister for Regional Development.

The forum was part of CEDA's popular ten part event series: 2014 – 2016 State of the Regions: Regional Development in WA. The Department of Regional Development and Royalties for Regions are a series sponsor.

The Pilbara Blueprint, as the definitive State Government strategy for the region, developed by the region, articulates the transformational opportunities for the continued growth of the Pilbara through the key areas of social development and economic diversification.

Acting Chief Executive Officer of the Pilbara Development Commission (Commission) Terry Hill thanked the Pilbara region for their input and support during the 18 months of extensive research and consultation.

"The Commission led the development of the Pilbara Blueprint, and will drive its implementation, but continued collaboration between industry, government and the community is needed to achieve a prosperous and sustainable future to 2050 and beyond," Mr Hill said.

The Pilbara Blueprint is a roadmap for the region, and sets out an aspirational but achievable new vision, with a population target of 200,000 by 2050. To achieve this target Mr Hill said the Pilbara will need more than business as usual thinking.

*"The Pilbara will undoubtedly continue to be the nation's economic powerhouse, with mineral and energy exports expected to flow for many decades."*

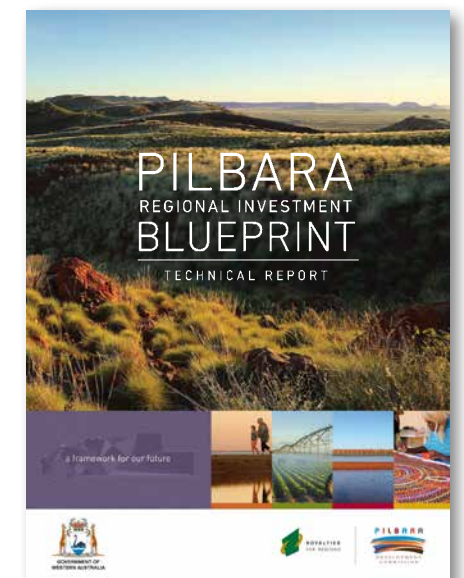
"There is no denying the Pilbara is in a transition phase, however changing global megatrends – such as an increasing world population, urbanisation and food security – present opportunities for the region. The Commission will ensure the Pilbara actively pursues and attracts investment to the opportunities which have been identified in the Pilbara Blueprint," Mr Hill said.

With an approach to diversifying the region's economy, the Pilbara Blueprint sees new and expanded industries including tourism, aquaculture and renewable energy as transformational opportunities.

The document is one of nine Blueprints being delivered to identify social and economic development strategies for each Western Australian region, along with a framework for sustainable growth for the next 35 years.

For more information about the Pilbara Regional Investment Blueprint, visit [www.pdc.wa.gov.au](http://www.pdc.wa.gov.au)

For more information on CEDA, and their popular ten part event series: 2014 – 2016 State of the Regions: Regional Development in WA, visit [www.ceda.com.au](http://www.ceda.com.au)





## New facilities for South West campers

The South West is well-known for its stunning landscapes, great wineries, diverse art galleries, pristine surf beaches and ancient underground caves. The region boasts some of the world's tallest hardwood trees, towering forests and scenic bushland, which make it very popular amongst caravanners and campers wanting to reconnect with the natural environment.

Two of the most popular campgrounds in the region have recently been upgraded as part of the \$21.05 million Parks for People initiative made possible by the State Government's Royalties for Regions program. This initiative forms part of the Government's five year, \$43.5 million Western Australian Caravan and Camping Action Plan.

Visitors to Conto campground in Leeuwin-Naturaliste National Park and Logue Brook campground adjacent to the Lake Brockman Tourist Park can now enjoy better facilities, enhancing their stay.

Conto and Logue Brook campgrounds join Gnaala Mia in Dryandra Woodland, Nanga Brook in Lane Poole Reserve,

Miners in Coalseam Conservation Park, and Osprey in Cape Range and Black Point in D'Entrecasteaux national parks as the latest campgrounds to be redeveloped under the Parks for People initiative. This initiative is providing Western Australians and visitors with low-cost, high-quality camping and caravanning opportunities around the State.

### Conto campground

\$1.1 million was invested in the Conto campground to develop 29 new campsites, barbecue shelters, roads and associated amenities.

Department of Parks and Wildlife Blackwood District Senior Ranger Kane Goodwin said the campground now has sites catering for a wide range of camping setups including smaller bush sites for tents, larger sites for caravans and camper trailers, and group camping areas.

*"Our rangers continue to receive positive feedback about how great the new facilities look and how functional the new sites are, particularly for those with larger caravans and camper trailers," Mr Goodwin said.*

"Many of the new sites have access to very clear exposure to sunlight, which seems to be important these days, with so many campers relying on solar powered systems."

The 29 campsites are located a good distance from each other – an additional benefit for visitors.

*"Even when the campground is busy you still feel like you have your own space and are not right next to other campers," Mr Goodwin said.*

Mr Goodwin said it was planned to add the Conto campground to Parks and Wildlife's online booking system <http://parkstay.dpaw.wa.gov.au/> by early 2016.

"This will be a really positive change as it will give campers certainty that they have secured a site, especially in peak times such as Easter and school holidays when the campground becomes full."

Did you know Leeuwin-Naturaliste is the most visited national park in Western Australia? Its accessible location in the South West coupled with spectacular scenery and variety of recreational activities on offer ensures it receives more than 3.2 million visits a year.

### Logue Brook campground

The \$3 million upgrade to the Logue Brook campground has seen the construction of 126 new campsites to accommodate about 540 campers. Works also included roads, barbecue shelters, picnic tables, a mountain bike pump track, and upgrades to the boat ramp, trailer parking area and associated amenities.

Parks and Wildlife Wellington District Parks and Visitors Services Coordinator Leon Price said the new facilities have received exceptional feedback from campers.

"The upgraded boat ramp has significantly improved access to the water and encourages more opportunities for recreational boating and fishing," Mr Price said.

"The new mountain bike pump track within the campground has also been a hit amongst visitors. All these works, along with the wide variety of camp site options now available, have definitely enhanced the visitor experience at Logue Brook.

"The campground was fully booked during the recent long weekend and a lot of campers are now getting in early for the Christmas and New Year period."

Campers are reminded that bookings for the Logue Brook campground can be made through the Lake Brockman Tourist Park on 9733 5402.

*"Logue Brook is a family oriented campground and caters to all ages," Mr Price said.*

*"I encourage everyone to come have a look at these top class facilities."*

Logue Brook recorded more than 47,000 visits in 2014-15 and is located about 10 minutes away from the town of Harvey.



Mountain bike pump track in Logue Brook, photo courtesy of Department of Parks and Wildlife



Barbecue shelter in Conto, photo courtesy of Department of Parks and Wildlife

## New community infrastructure for Yuna

The community of Yuna and surrounding areas are enjoying the new Yuna Multipurpose Community Centre (centre) and sealing of East Bowes Road connecting Yuna with Northampton.

Shire of Chapman Valley Chief Executive Officer Maurice Battilana said that the two projects were received well by the community.

"The centre was designed by the community to provide facilities for sporting groups, business training, community and industry meetings, playgroup and crèche centre, ablutions for tourists, as well as a place for community events," Mr Battilana said.

*"The centre will enhance the quality of life for the community of Yuna and become the community hub of the district because of Yuna's central location to surrounding rural communities."*

Mr Battilana said sealing and widening the 12.2 kilometre gravel East Bowes Road was a high priority for the Mid West.

"It is the main road that links the townsites of Yuna and Northampton, connecting inland areas to the coastal areas of Horrocks and Port Gregory via Northampton," Mr Battilana said.

"It provides a safer and more reliable road for tourists during the popular wildflower season, local school busses, heavy haulage vehicles and other local traffic."

Royalties for Regions invested \$250,000 towards the Yuna Multipurpose Community Centre of which an additional amount of

approximately \$575,000 was leveraged to complete the project. An amount of \$600,000 was invested for East Bowes Road through the Mid West Investment Plan administered by the Mid West Development Commission, with an additional amount of approximately \$2.28 million leveraged from other Royalties for Regions, Commonwealth and Shire funding programs.



Community gather at the official opening of Yuna Multipurpose Centre, photo courtesy of the Shire of Chapman Valley



# Better connectivity in the regions

Mobile and internet coverage has been dramatically improved in regional Western Australia thanks to the completion of the \$40 million Regional Mobile Communications Project.

The Royalties for Regions project, established in 2011, has now successfully delivered 113 mobile phone towers across our nine regions, providing voice and high speed data coverage along major transport corridors and between towns. Overall the project has established an extra 8,650 kilometres of highway coverage in regional areas and increased Telstra's Western Australian mobile footprint by 31 per cent to around 567,000 square kilometres.

The Regional Mobile Communications Project, which was completed in September last year, has boosted mobile and internet reception across 135,000 square kilometres along the State's major road corridors. The project has achieved almost continuous in-car kit coverage

along Western Australia's Highway 1, with the route between Kununurra and Eucla now representing the longest stretch of continuous in-car kit coverage in the world.

The impact of the new communication towers in regional areas has been far-reaching, from improving safety and emergency service capabilities and connecting communities, to opening up education opportunities and global markets for local economies. Bringing digital connectivity to some of these very remote areas means that people living in and visiting regional Western Australia can now access the internet, make phone calls, and do things that many other parts of the country take for granted.

Due to the success of the Regional Mobile Communications Project, a further \$45 million has been invested to install another 85 telecommunications towers in small communities as part of the Regional Telecommunications Project.

The State Government has committed to deliver the first 23 priority mobile base stations by June 2016. Towers have already been launched in the Wheatbelt towns of Wongan Hills, Tammin and Westonia as well as Nyabing in the Great Southern. Through these towers, residents are now experiencing improved mobile telephone coverage and high-speed wireless broadband.

In addition to the first 23 sites, 130 new or upgraded mobile base stations will be co-funded by the State and Commonwealth Governments under the \$100 million Mobile Black Spot Program, announced earlier this year. This will result in a total of 153 new towers being constructed across the State in the next few years.

Priority locations for new towers were identified after a complex needs assessment completed in 2014 by the Department of Commerce and endorsed by the Regional Development Commissions. The assessment identified where new mobile coverage would provide the greatest social and economic impact to businesses and communities.

Executive Director, Department of Regional Development Michelle Mackenzie said the projects would significantly reduce mobile telephone and data coverage gaps in small communities and at strategic locations in regional Western Australia.

---

*"This in turn enhances safety and convenience for people living in and visiting regional Western Australia and ultimately breaks down the digital divide between regional and urban areas," Ms Mackenzie said.*

---



Tammin mobile tower, photo courtesy of Department of Commerce

Level 2, 140 William Street, PERTH WA 6000 | Postal Address: PO Box 1143, WEST PERTH WA 6872 | Telephone: +61 8 6552 1800

Free call: 1800 049 155 (Country Only) | Facsimile: +61 8 6552 1850

Email: [info@drd.wa.gov.au](mailto:info@drd.wa.gov.au) | Website: [www.drd.wa.gov.au](http://www.drd.wa.gov.au)

