



Department of
Primary Industries and
Regional Development

Digital Library

Regional profile

Regional development

8-2018

Pilbara: A regional profile

Department of Primary Industries and Regional Development, Western Australia

Follow this and additional works at: https://library.dpird.wa.gov.au/rd_profile

Recommended Citation

Department of Primary Industries and Regional Development, Western Australia. (2018), *Pilbara: A regional profile*. Department of Primary Industries and Regional Development, Perth. Book.

This book is brought to you for free and open access by the Regional development at Digital Library. It has been accepted for inclusion in Regional profile by an authorized administrator of Digital Library. For more information, please contact library@dpird.wa.gov.au.

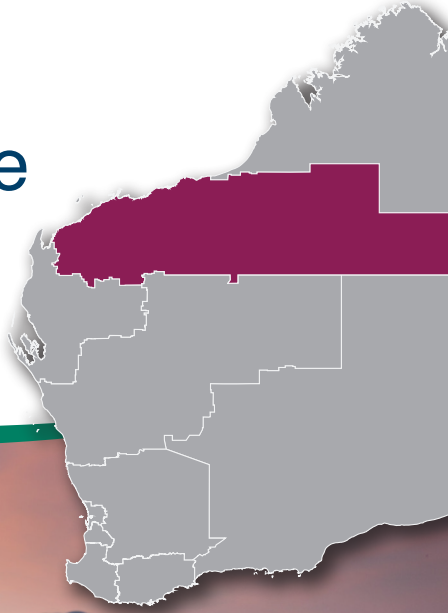


Department of
**Primary Industries and
Regional Development**



Pilbara:

A regional profile

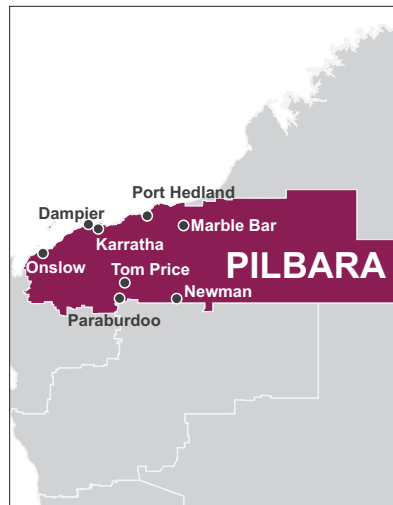


Credit: Margaret Berling

The Pilbara region is situated in the north of the state, bordered by the Indian Ocean to the west and extending across the Great Sandy Desert to the Northern Territory border in the east.

The rapid expansion of iron ore production and construction of some of the world's largest gas projects has seen the Pilbara become a globally-significant mining region.

While the resources sector will remain the primary economic driver of the Pilbara, the region has a number of comparative advantages, such as existing economic infrastructure, well-serviced modern towns, natural resources, strong investment links and close proximity to Asia, that present new economic opportunities. These advantages will see the region expand existing industries such as tourism and agriculture and develop new economic activity through solar energy and seafood production.



Facts



Largest iron ore producer and exporter in the world

30% of Australia's oil and gas is from the Pilbara




20% of WA's land mass, about the same size as Spain



Ideal coastline and conditions for aquaculture



30% of the Pilbara is covered by pastoral leases



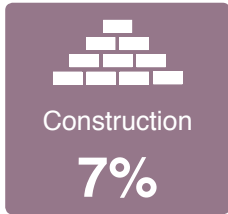
929,000 visitors annually



World's largest bulk export port in the world – Port Hedland

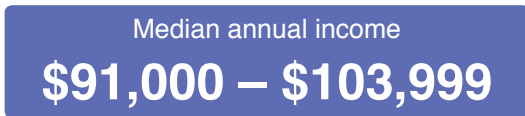
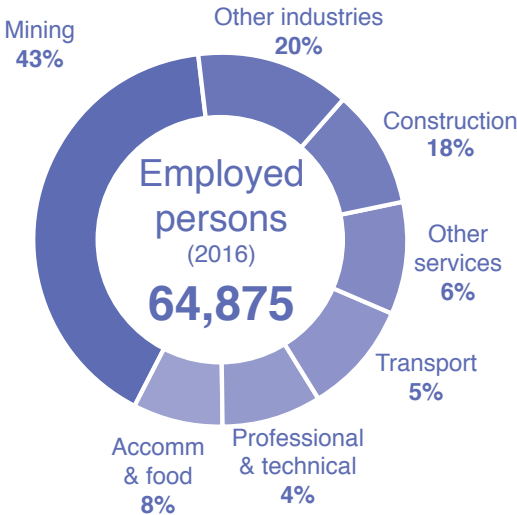
Figures

Economic

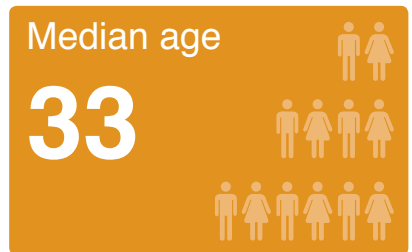
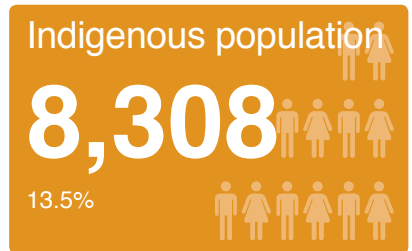


Source: DPIRD 2017 Gross Regional Product (GRP); ABS State Accounts (5220.0); ABS 2016 Census data.

Employment



Community



Source: Australian Bureau of Statistics (ABS) 2016 Census of Population and Housing



For further information on the Pilbara, contact:

**Pilbara Development Commission –
Department of Primary Industries and Regional Development**

Level 2, The Quarter HQ, 20 Sharpe Avenue, Karratha WA 6714

Phone: 1800 843 745 | Email: pdc@pdc.wa.gov.au | Website: pdc.wa.gov.au

Important disclaimer

The Chief Executive Officer of the Department of Primary Industries and Regional Development and the State of Western Australia accept no liability whatsoever by reason of negligence or otherwise arising from the use or release of this information or any part of it.

© Department of Primary Industries and Regional Development, 2018