



Department of
Primary Industries and
Regional Development

Digital Library

Environmental Weed Risk Assessments

Biosecurity, pests, weeds and diseases
research

2022

Bothriochloa pertusa - environmental weed risk assessment 2022

Department of Primary Industries and Regional Development, Western Australia

Follow this and additional works at: https://library.dpird.wa.gov.au/bs_wra



Part of the [Biosecurity Commons](#), and the [Weed Science Commons](#)

Recommended Citation

Department of Primary Industries and Regional Development, Western Australia. (2022), *Bothriochloa pertusa - environmental weed risk assessment 2022*. Department of Primary Industries and Regional Development, Western Australia, Perth. Report.
https://library.dpird.wa.gov.au/bs_wra/5

This report is brought to you for free and open access by the Biosecurity, pests, weeds and diseases research at Digital Library. It has been accepted for inclusion in Environmental Weed Risk Assessments by an authorized administrator of Digital Library. For more information, please contact library@dpird.wa.gov.au.

Environmental weed risk assessment

Indian bluegrass (*Bothriochloa pertusa*)

Indian bluegrass is a stoloniferous, mat-forming, tropical (C4) perennial grass.

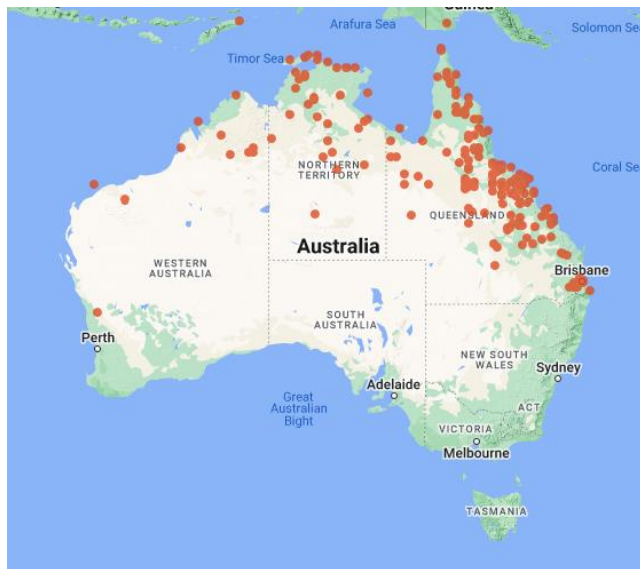
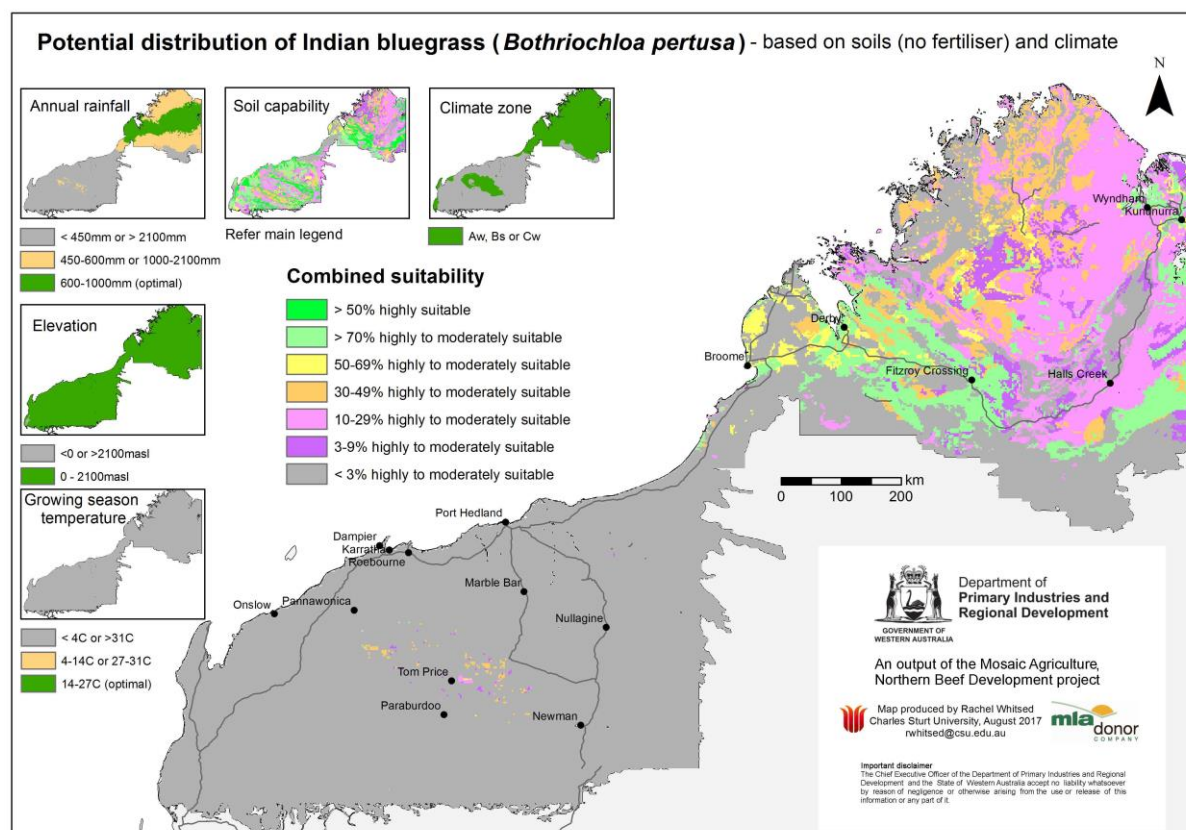


Figure 1 Distribution of Indian bluegrass (*Bothriochloa pertusa*) in Australia
(Source: 'The Australasian Virtual Herbarium')

Invasiveness and Impacts scores by Rod Randall

Invasiveness score	Impacts score
7.0	4.5

Potential distribution



Region	Area of suitable soils and climate (million ha)	Potential distribution score
Kimberley (>450mm AAR*)	8.1Mha	7.0
Kimberley (<450mm AAR)	0	0.5
Pilbara (>450mm AAR)	0.05Mha	1.0
Pilbara (<450mm AAR)	0	0.5
Gascoyne – Goldfields	0	0.5

*AAR – Average annual rainfall

Overall weed risk assessment

Region	WRA calculation*	Weed risk score	WRA rating
Kimberley (>450mm AAR)	7.0 x 4.5 x 7.0	220.5	High
Kimberley (<450mm AAR)	7.0 x 4.5 x 0.5	15.8	Negligible-low
Pilbara (>450mm AAR)	7.0 x 4.5 x 1.0	31.5	Negligible-low
Pilbara (<450mm AAR)	7.0 x 4.5 x 0.5	15.8	Negligible-low
Gascoyne – Goldfields	7.0 x 4.5 x 0.5	15.8	Negligible-low

* Invasiveness (0-10) x Impacts (0-10) x Potential Distribution (0-10) = Weed risk score (0-1000)

Updated May 2022

Important disclaimer

The Chief Executive Officer of the Department of Primary Industries and Regional Development and the State of Western Australia accept no liability whatsoever by reason of negligence or otherwise arising from the use or release of this information or any part of it.

Copyright © Department of Primary Industries and Regional Development, 2022