



Department of
Primary Industries and
Regional Development

Digital Library

Regional profile

Regional development

8-2018

Goldfields-Esperance: A regional profile

Department of Primary Industries and Regional Development, Western Australia

Follow this and additional works at: https://library.dpird.wa.gov.au/rd_profile

Recommended Citation

Department of Primary Industries and Regional Development, Western Australia. (2018), *Goldfields-Esperance: A regional profile*. Department of Primary Industries and Regional Development, Perth. Book.

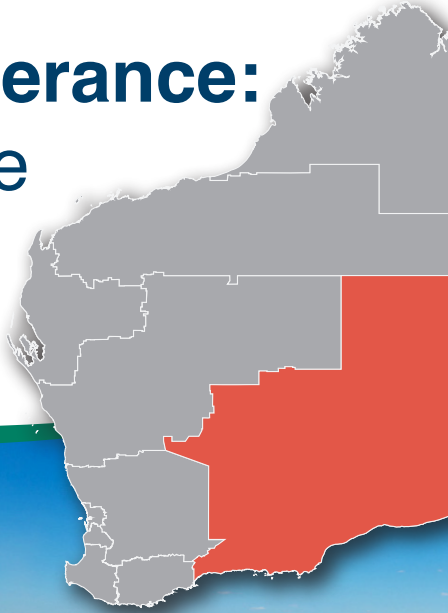
This book is brought to you for free and open access by the Regional development at Digital Library. It has been accepted for inclusion in Regional profile by an authorized administrator of Digital Library. For more information, please contact library@dpird.wa.gov.au.



Department of
**Primary Industries and
Regional Development**



Goldfields-Esperance: A regional profile



The Goldfields-Esperance region is vast, covering a land area of 771,276km² and comprising red deserts, expansive mineral wealth, the magnificent Great Western Woodlands and the iconic white, sandy beaches of the Southern Ocean. The region is situated in the south-eastern part of Western Australia and includes nine local government areas.

The Goldfields-Esperance generates over \$18 billion per annum in economic output, with around 29,000 employed people working in the region, and nearly 4,500 businesses, half of which are sole traders. Major industries include mining, agriculture and fisheries, transport and logistics, education and social services and tourism. The region produces an array of resource and agricultural commodities, and imports and exports product across the globe, through the Southern Port facility in Esperance.

Founded on mineral wealth and a strong mining heritage, the region is an important mining hub for Western Australia accounting for over 10% of the State's mineral and petroleum production (2015-16).



Facts



Largest region in WA, three times the size of Victoria



Esperance Port is the deepest port in the southern hemisphere



Exported 14,465,000 tonnes in 2016



Between 14 and 16 distinct Aboriginal languages in the region



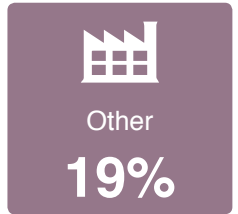
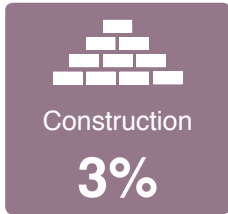
Hosts the only regionally-based WA School of Mines

Kalgoorlie Super Pit - Australia's largest open goldmine



Figures

Economic

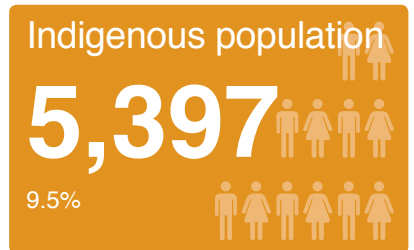
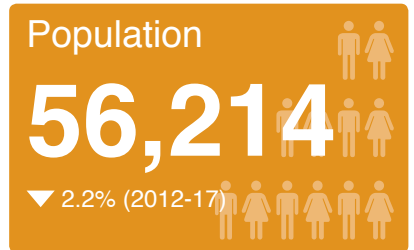


Source: DPIRD 2017 Gross Regional Product (GRP); ABS State Accounts (5220.0); ABS 2016 Census data.

Employment



Community



Source: Australian Bureau of Statistics (ABS) 2016 Census of Population and Housing



For further information on the Goldfields-Esperance, contact:

**Goldfields-Esperance Development Commission –
Department of Primary Industries and Regional Development**

Ground Floor, Viskovich House, 377 Hannan Street, Kalgoorlie WA 6430

Phone: +61 8 9080 5000 | Email: gedckal@gedc.wa.gov.au | Website: gedc.wa.gov.au

Important disclaimer

The Chief Executive Officer of the GEDC, the Chief Executive Officer of DPIRD and the State of Western Australia accept no liability whatsoever by reason of negligence or otherwise arising from the use or release of this information or any part of it.

© Department of Primary Industries and Regional Development, 2018