



Department of  
Primary Industries and  
Regional Development

Digital Library

---

Maps

Regional development

---

5-2022

## LGA Boundaries Southern WA

Department of Primary Industries and Regional Development, Western Australia

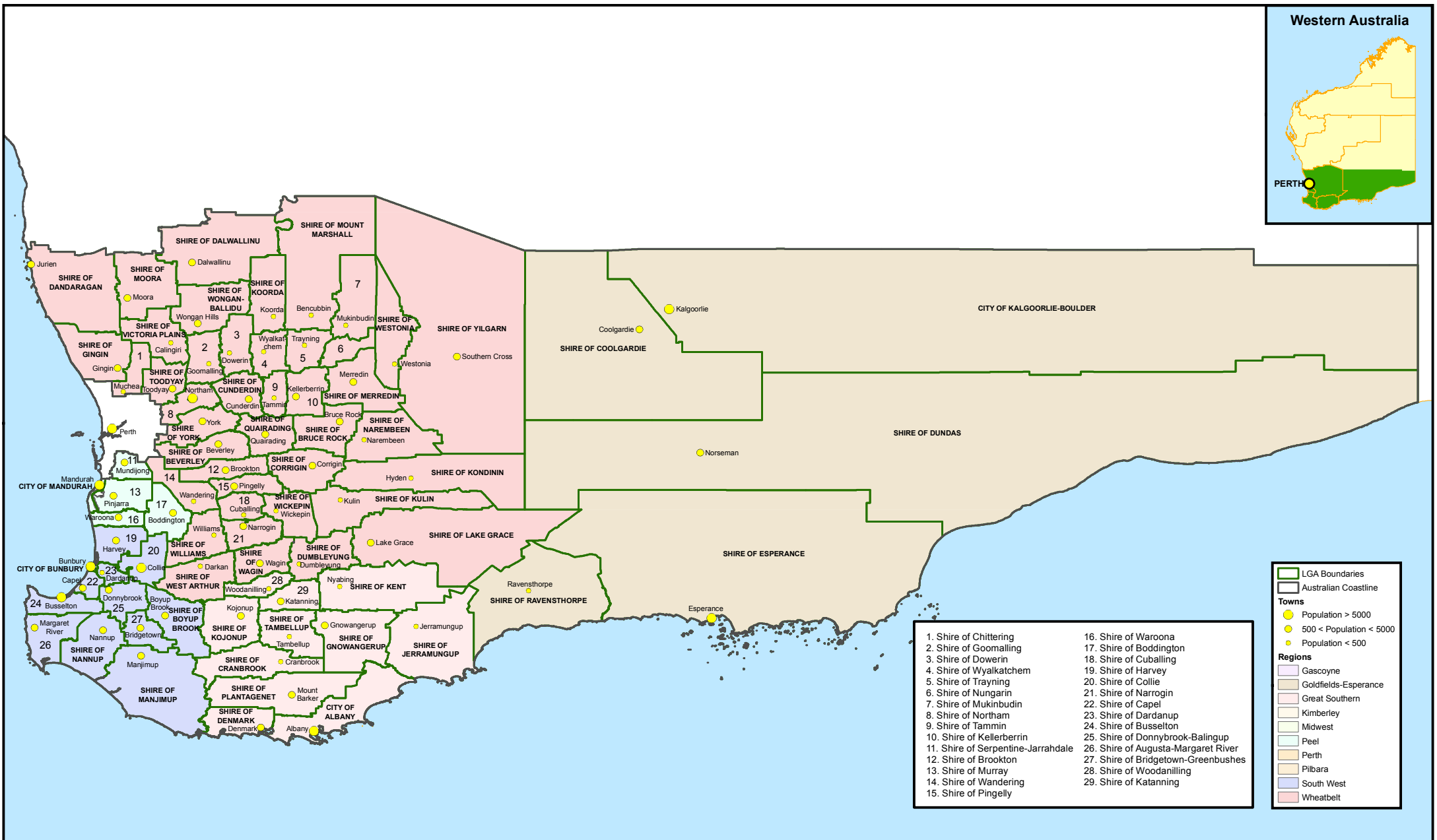
Follow this and additional works at: [https://library.dpird.wa.gov.au/rd\\_maps](https://library.dpird.wa.gov.au/rd_maps)

---

### Recommended Citation

Department of Primary Industries and Regional Development, Western Australia. (2022), *LGA Boundaries Southern WA*. Department of Primary Industries and Regional Development, Perth. Book.

This book is brought to you for free and open access by the Regional development at Digital Library. It has been accepted for inclusion in Maps by an authorized administrator of Digital Library. For more information, please contact [library@dpird.wa.gov.au](mailto:library@dpird.wa.gov.au).




# MAP 2: SOUTHERN W.A. KEY FEATURES

The purpose of this map is to display the Local Government Area boundaries for the Wheatbelt, Peel, South West, Great Southern and northern Goldfields-Esperance regions.

**Datum and Projection Information**  
Vertical Datum: Australian Height Datum (AHD)  
Horizontal Datum: Geocentric Datum of Australia 94  
Projection: MGA 94 Zone 50  
Spheroid: Australian National Spheroid

**Project Information**  
Client: Regional Development and Lands  
Map Author: Aidan Belouardi  
Filepath: J:\gis\projects\ProjectID\_Series\0110110038\_Pilbara\_Director\0007\DLGRD Request - Alex Ballie\Local\_Government\_Area\_Map\mxd  
Filename: Map2-WA\_South-Legend-A4.mxd  
Completion Date: 16/02/2010

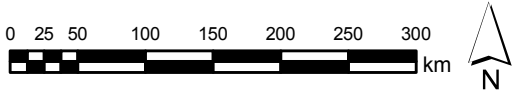


Government of Western Australia  
Department of Water

This map is a product of the Department of Water (Spatial Services), and was printed on 10/03/2010.

This map was produced with the intent that it be used for display purposes, at the scale of 1:5,600,000 when printing at A4.

While the Department of Water has made all reasonable efforts to ensure the accuracy of this data, the department accepts no responsibility for any inaccuracies and persons relying on this data do so at their own risk.





Government of Western Australia  
Department of Regional Development and Lands

| DATA DICTIONARY |          |               |
|-----------------|----------|---------------|
| DATASET         | SOURCE   | DATE          |
| LGA Boundaries  | Landgate | March 2009    |
| Towns           | Landgate | December 2006 |